

Object: Newbold1

Latitude: 40 8.045065 N

Longitude: 074 45.35804 W

Depth: 38.1' MLLW

Ref to Channel: 50' inside Red Toe

Comments: Confirmed Tree with ROV. Possibly caught on Boulder. Has not moved in several weeks

Object: Enterprise1

Latitude: 40 3.462072 N

Longitude: 074 57.576461 W

Depth: 34.2' MLLW

Ref to Channel: 20' inside Green Toe

Comments: Possible Tree 25' in length. Has not moved through several surveys

Enterprise 1

Mud Island 1

Object: Mud Island 1

Latitude: 40 3.127005 N

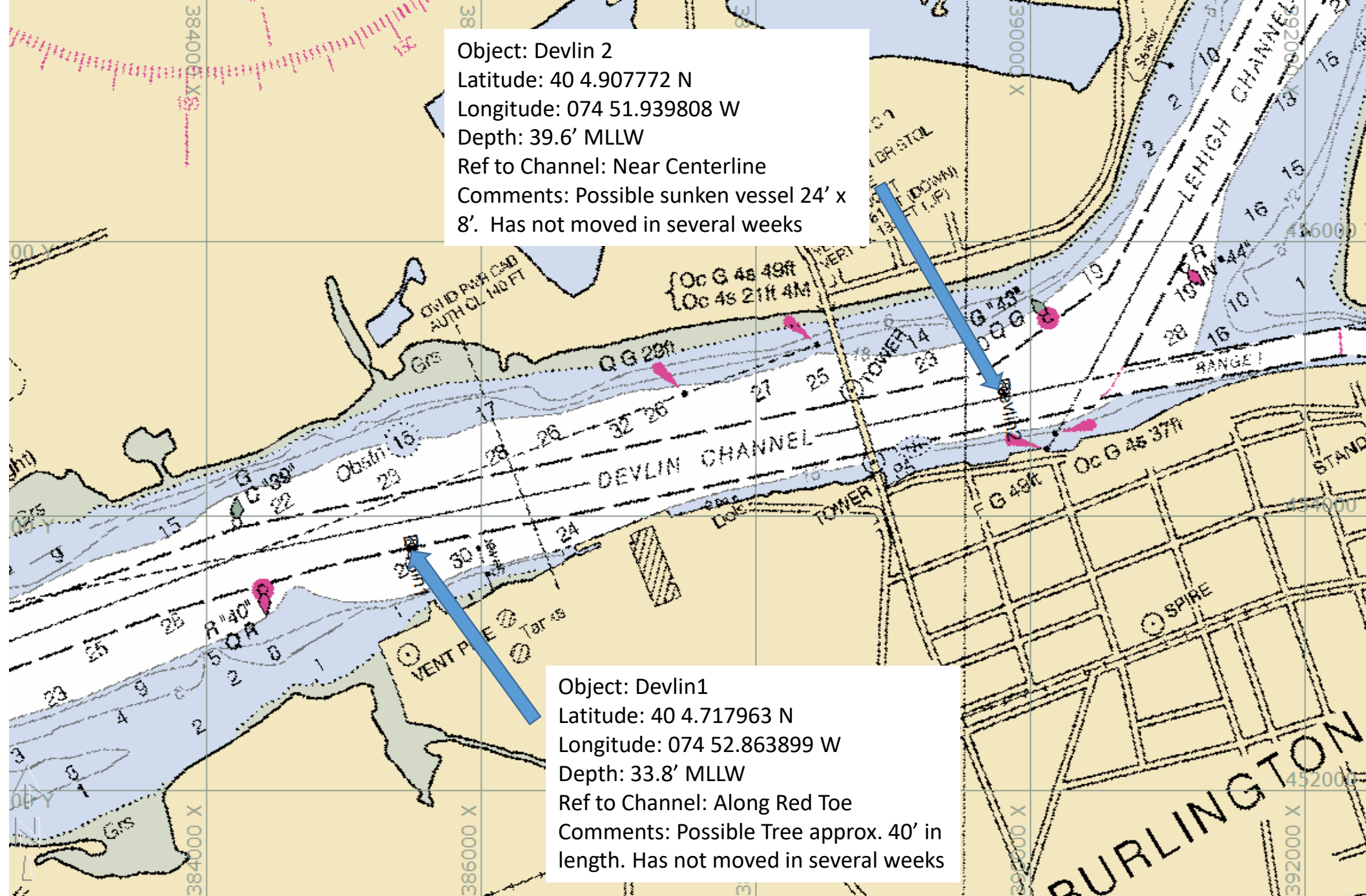
Longitude: 074 58.028192 W

Depth: 39.5' MLLW

Ref to Channel: 30' inside Red Toe

Comments: Possible Boulder

Object: Devlin 2
Latitude: 40 4.907772 N
Longitude: 074 51.939808 W
Depth: 39.6' MLLW
Ref to Channel: Near Centerline
Comments: Possible sunken vessel 24' x
8'. Has not moved in several weeks



Object: Torresdale2

Latitude: 40 2.023443 N

Longitude: 074 59.803077 W

Depth: 38.3 MLLW

Ref to Channel: 40' inside Green Toe

Comments: Sunken vessel

Approx. 20' in length confirmed with ROV. Has not moved since located in May

Object: Torresdale1

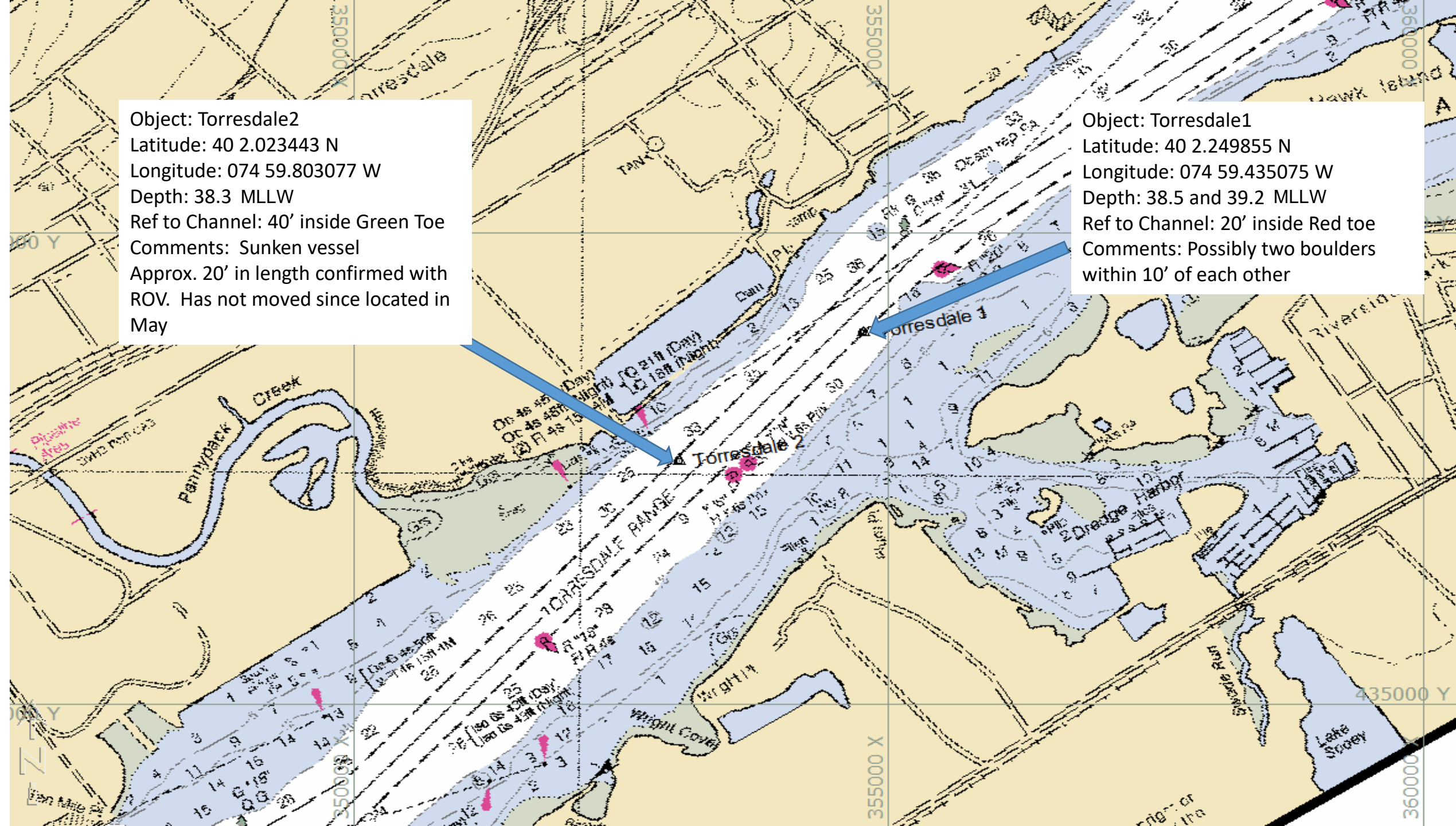
Latitude: 40 2.249855 N

Longitude: 074 59.435075 W

Depth: 38.5 and 39.2 MLLW

Ref to Channel: 20' inside Red toe

Comments: Possibly two boulders within 10' of each other



Object: Roebling 2

Latitude: 40 7.272415 N

Longitude: 074 47.035162 W

Depth: 38.7' MLLW

Ref to Channel: 75' inside Green Toe

Comments: Possible Tree approx. 10' in length.

Moved 20' upriver over several weeks

Object: Kinkora 2

Latitude: 40 7.311764 N

Longitude: 074 46.908304 W

Depth: 39.1' MLLW

Ref to Channel: 75' inside Green Toe

Comments: Possible Tree approx. 40' in length. Has not moved in several weeks

