

US Wind Kicks Off Survey Activities in Maryland Offshore Lease Area

Maryland-based offshore wind developer, US Wind, will begin an extensive oceanographic research campaign in the Maryland offshore wind lease area in the first week of April and continues into July 2021. The company will deploy a team of scientists and other experts aboard two research vessels to conduct detailed geophysical surveys of the offshore wind lease.

Offshore geophysical surveys provide a detailed image of the seafloor to inform decisions on project design, including types of foundations, turbine locations and cable burial routes. Geophysical surveys are also used to better understand the geological issues that may exist with project development and ensure safe and long-term operations and performance of offshore wind facilities. The planned survey program will include data collection along a tartan-pattern survey grid throughout the lease area.

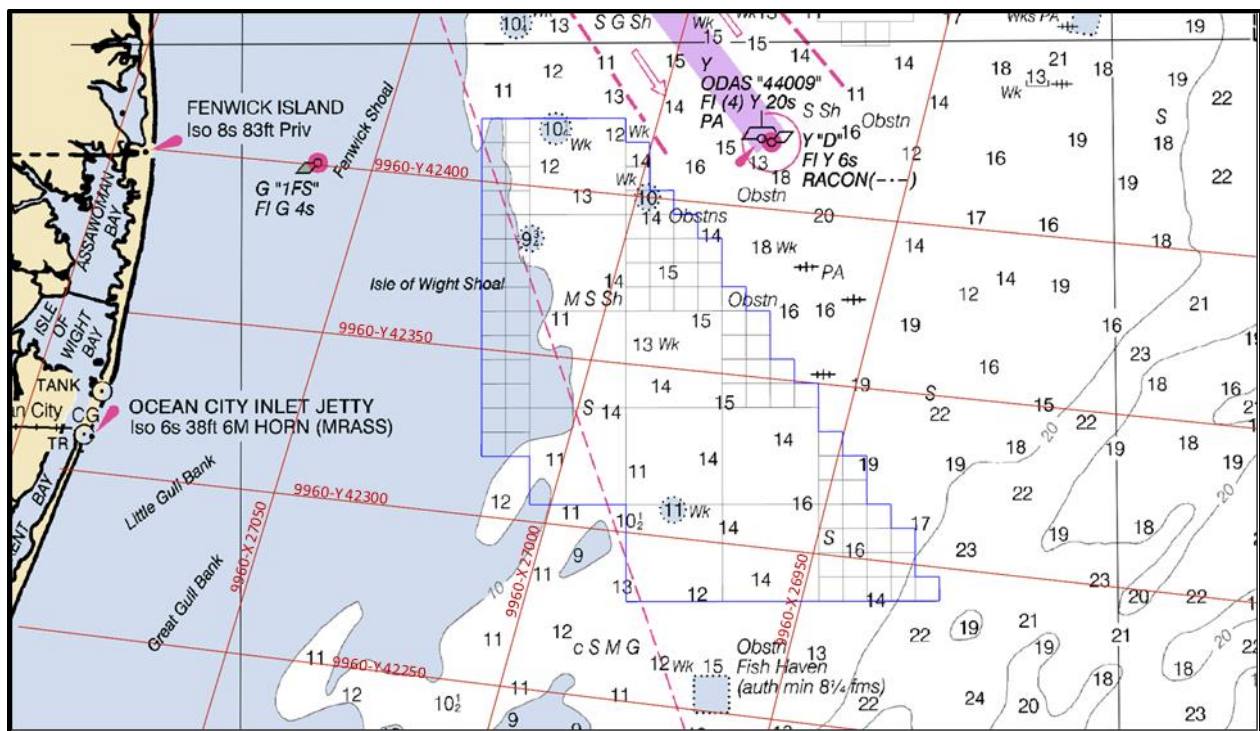


Chart depicting US Wind lease area off Maryland's coast (not to be used for navigation purposes)

Approximate WGS84 Coordinates (Lease Area OCS-A 0490)				
	Latitude N	Longitude W	Latitude N	Longitude W
1	38 27.998	74 51.747	5	38 17.608
2	38 27.990	74 46.795	6	38 17.614
3	38 14.985	74 36.138	7	38 18.913
4	38 15.013	74 46.835		73 51.764



The geophysical survey operations will be conducted by the U.S. marine research vessels R/V Brooks McCall and the R/V Miss Emma McCall, operated by TDI Brooks, Inc.

Both multi-use oceanographic research vessels are equipped to acquire geophysical surveys for offshore hazard/site clearance assessments, pipeline/cable routing, seafloor mapping, port and channel conditions, fisheries habitat mapping and burial assessment studies.

US Wind has already begun an extensive outreach effort to local fishermen to inform them of these survey activities. US Wind's dedicated fisheries outreach specialists at Sea Risk Solutions will regularly update local fishermen on the expected activities of the survey vessels. There will be no restriction on fishing in the offshore wind lease area due to these survey activities.

US Wind will implement extensive efforts to minimize impacts to marine life during survey operations. Expert Protected Species Observers will be aboard each vessel to monitor for the presence of protected species, such as the North Atlantic Right Whale, and to ensure that appropriate measures are taken to protect these species.



R/V BROOKS MCCALL



R/V MISS EMMA MCCALL

R/V Brooks McCall – LOA 160'; Call Sign: WCZ7811; MMSI: 338257000

R/V Emma McCall – LOA 153'; Call Sign: WDG8742; MMSI: 338100000

For more information, please contact Nancy Sopko, Director, External Affairs: n.sopko@uswindinc.com; 609-575-5350