

Mid-Atlantic Survey Activity

Mariners Briefing

Date of notice: May 10th, 2021

Notice no. 078

Overview

These briefings are intended to update mariners on marine operations for the Mid-Atlantic survey activities. Survey operations are planned for locations throughout the lease area (see chart) and are expected to last several months. These operations involve only the survey phase of the projects.

Mariners briefings are submitted as needed to the U.S. Coast Guard and distributed to the fishing community and interested mariners on our website at: us.orsted.com/mariners or via email upon request through Kara Gross (KARGR@orsted.com).

Vessels will make a daily securite calls on VHF CH 16 at 0600 and 1800

About the wind farms

Ocean Wind (OCW), with the support of PSEG, is a planned offshore wind farm located 15 miles off the New Jersey coast able to deliver clean energy to the New Jersey electrical grid.

Ongoing OCW survey activities

- Projected End: June 2021

Skipjack Wind (SJW) is a planned offshore wind farm located 19 miles off the Delmarva Coast able to deliver clean energy to the Maryland electrical grid.

Ongoing SJW survey activities

- Projected End: October 2021

Contact

For fisheries related inquiries:

Kara Gross
Mid-Atlantic Fisheries Liaison
Phone: 857.330.7699
Email: KARGR@orsted.com

Ross Pearsall
Fisheries Stakeholders Relations Manager
Phone: 857.278.2442
Email: ROSPE@orsted.com

Rodney Avila
Corporate Fisheries Liaison
Phone: 857.332.4479
Email: RODAV@orsted.com



Ocean Researcher

MV Ocean Researcher is used for geophysical surveying

Flag: UK

LOA: 226 ft

Beam: 46 ft

Call Sign: GDLS

IMO: 8207941

Project: Skipjack Wind



Ocean Endeavour

MV Ocean Endeavour is used for geophysical surveying

Flag: UK

LOA: 253 ft

Beam: 48 ft

Call Sign: GAAL

IMO: 8402008

Project: Skipjack Wind



Ocean Observer

MV Ocean Observer is used for geophysical surveying

Flag: UK

LOA: 262 ft

Beam: 50 ft

Call Sign: GHXX

IMO: 8511275

Project: Ocean Wind



Leeway Striker

MV Striker is used for geophysical surveying

Flag: CA

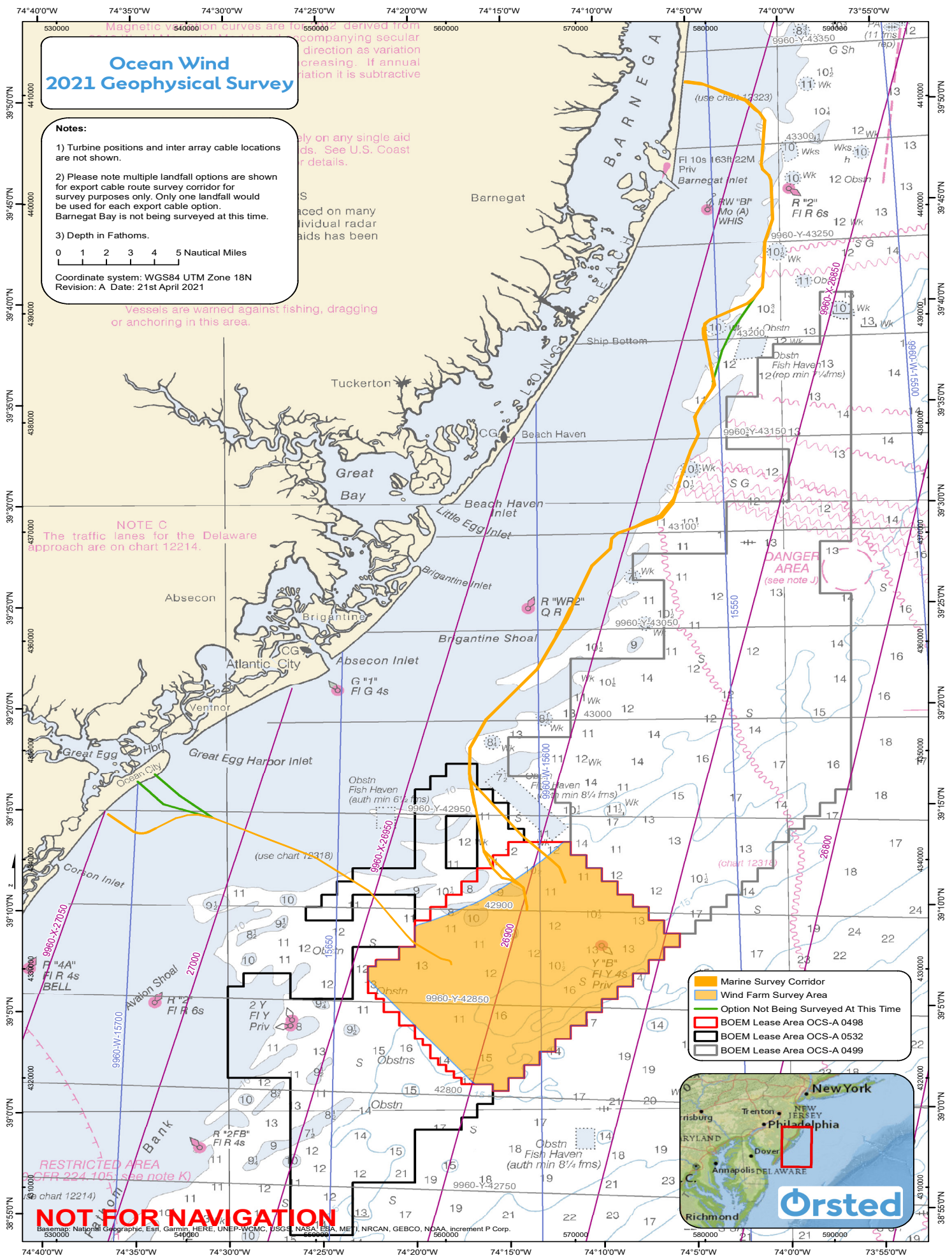
LOA: 72 ft

Beam: 16.5 ft

Project: Ocean Wind

Vessel name	Site function	Project	Activity	Projected outlook
Ocean Researcher	Geophysical survey vessel	Skipjack Wind	Vessel will conduct survey operations inside the lease area / wx dependent	Vessel will conduct survey operations inside the lease area / wx dependent
Ocean Endeavour	Geophysical survey vessel	Skipjack Wind	Vessel transiting from Port Elizabeth, NJ to conduct calibrations inside and outside of the lease area	Vessel to perform calibrations inside and outside of the lease area
Ocean Observer	Geophysical survey vessel	Ocean Wind	Vessel conducting survey operations along project cable route / wx dependent	Vessel conducting survey operations along project cable route / wx dependent
Leeway Striker	Geophysical survey vessel	Ocean Wind	Vessel mobilizing in port and offshore calibrations	Survey operations expected to begin late this week

****All Mariners transiting or fishing in the survey area are requested to give a wide berth to survey vessels as they may be limited in their ability to maneuver (VRAM) and towing gear out to 300 meters behind the vessel. Vessels in the vicinity of the survey vessels should operate in a manner that will not endanger the vessel or associated equipment****



Notice to Mariners 2021 Geophysical Survey

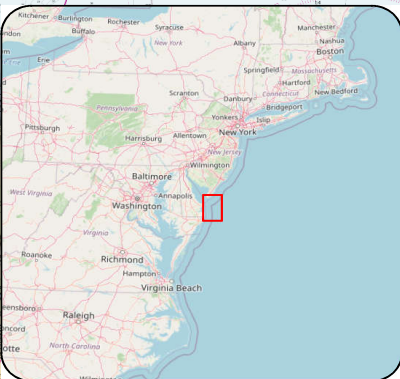
-  Skipjack Wind Survey Area
-  BOEM Lease Areas

Notes:

- 1) Turbine positions and inter array cable locations are not shown.
- 2) Depth in Fathoms.

0 0.5 1 1.5 2 Nautical Miles

Coordinate system: WGS84 UTM Zone 18N



Orsted

PUBLIC

Service Layer Credits: © OpenStreetMap (and) contributors, CC-BY-SA
NOAA Office of Coast Survey

OCS-A 0482

OCS-A 0519

FI Y 6s
Obstn

18 Wk
PA

NOT FOR NAVIGATION