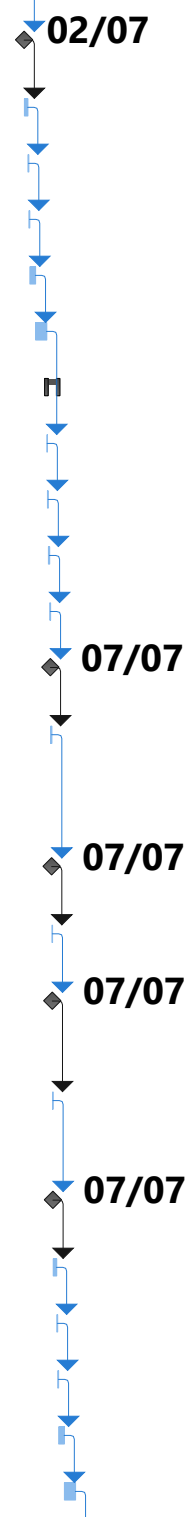


ID	Task Name	Duration	Start	Finish	Predecessor	
0	ULISSE	150.69 days	Sat 27/04/19 00:00	Tue 24/09/19 16:30		M J J A S O
1	SILVER RUN - DELAWARE TO NEW JERSEY	150.69 days	Sat 27/04/19 00:00	Tue 24/09/19 16:30		
2	Transit	2 days	Sat 27/04/19 00:00	Mon 29/04/19 00:00		
3	Transit from Eemshaven to Nordenham Cable Factory	2 days	Sat 27/04/19 00:00	Mon 29/04/19 00:00		
4	Cable Loading @ NSW	12 days	Mon 29/04/19 00:00	Sat 11/05/19 00:00		
5	Preparations for loading	5 days	Mon 29/04/19 00:00	Sat 04/05/19 00:00	3	
6	Loading (7 x 4.8km)	7 days	Sat 04/05/19 00:00	Sat 11/05/19 00:00	5	
7	Mobilisation for USA Operations	21 days	Sat 11/05/19 00:00	Sat 01/06/19 00:00		
8	Transit from Nordenham to Shipyard	2 days	Sat 11/05/19 00:00	Mon 13/05/19 00:00	6	
9	Install Scrubbers for USA Operations	17 days	Mon 13/05/19 00:00	Thu 30/05/19 00:00	8	
10	Transit from Shipyard to Holland for Semi-sub loading	2 days	Thu 30/05/19 00:00	Sat 01/06/19 00:00	9	
11	Ulisse Transportation	30 days	Sat 01/06/19 00:00	Mon 01/07/19 00:00		
12	Transportation with semisub (15d @ 10kn, 4d loading/unloading, 5 days contig)	24 days	Sat 01/06/19 00:00	Tue 25/06/19 00:00	10	
13	Transit to Wilmington	1 day	Tue 25/06/19 00:00	Wed 26/06/19 00:00	12	
14	Custom Clearance & Local Mob	5 days	Wed 26/06/19 00:00	Mon 01/07/19 00:00	13	
15	Pre Lay Jetting Run Operations (PLJR)	36.07 days	Mon 01/07/19 00:00	Tue 06/08/19 01:45		
16	Pre Lay Run 1st Cable	2.51 days	Mon 01/07/19 00:00	Wed 03/07/19 12:15		
17	Transit from Wilmington to Delaware Landing Site	12 hrs	Mon 01/07/19 00:00	Mon 01/07/19 12:00	14	
18	Set up anchor spread	4 hrs	Mon 01/07/19 12:00	Mon 01/07/19 16:00	17	
19	Build VI	6 hrs	Mon 01/07/19 16:00	Mon 01/07/19 22:00	18	
20	PLJR 519m @150m/hr (NO anchor moves) to HOLD POINT 1.	3.5 hrs	Mon 01/07/19 22:00	Tue 02/07/19 01:30	19	
21	Hold Point 1 - Contact Authorities and gain permission to run anchors across Navigation Channel.	0 days	Tue 02/07/19 01:30	Tue 02/07/19 01:30	20	02/07
22	PLJR 428m @75m/hr (including anchor moves) to HOLD POINT 2. Barge at West edge of Navigation Channel. During this skid pattern Spuds can be deployed and FWD anchor wires slackened to seabed if required to allow vessels to pass (1 hour notice required)	5.75 hrs	Tue 02/07/19 01:30	Tue 02/07/19 07:15	21	
23	Hold Point 2 - Barge at West edge of Navigation Channel. Anchors re-run to new positions.	0 days	Tue 02/07/19 07:15	Tue 02/07/19 07:15	22	02/07
24	PLJR 476m @150m/hr (NO anchor moves) across the Navigation Channel to HOLD POINT 3. Depth of Water too deep to deploy Spuds.	3.2 hrs	Tue 02/07/19 07:15	Tue 02/07/19 10:27	23	
25	Hold Point 3 - Barge clear at East edge of Navigation Channel. Spuds can be deployed and AFT anchor wires slackened to seabed if required to allow vessels to pass (1 hour notice required)	0 days	Tue 02/07/19 10:27	Tue 02/07/19 10:27	24	02/07

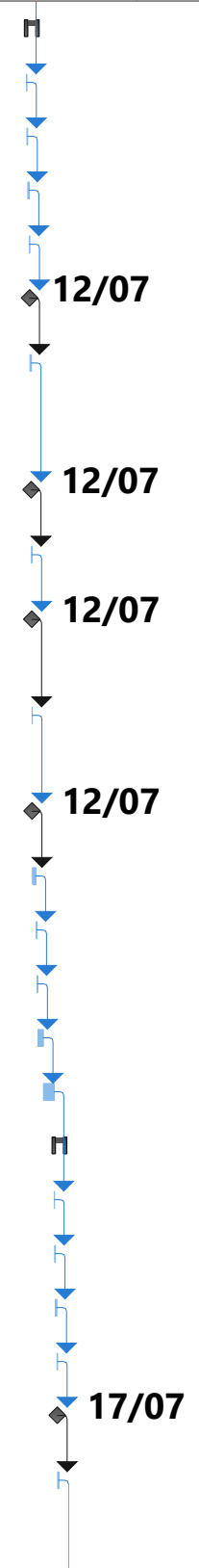
Project: ULISSE Date: Thu 07/02/19 23:20	Task		Project Summary		Manual Task		Start-only		Deadline	
	Split		Inactive Task		Duration-only		Finish-only		Progress	
	Milestone		Inactive Milestone		Manual Summary Rollup		External Tasks		Manual Progress	
	Summary		Inactive Summary		Manual Summary		External Milestone			

ID	Task Name	Duration	Start	Finish	Predecessor	M	J	J	A	S	O
26	PLJR 190m @100m/hr (FWD anchor moves) up to Navigation Channel to HOLD POINT 4. During this skid pattern Spuds can be deployed and AFT anchor wires slackened to seabed if required to allow vessels to pass (1 hour	1.9 hrs	Tue 02/07/19 10:27	Tue 02/07/19 12:21	25						
27	Hold Point 4 - Last anchor cleared from Navigation Channel. Anchors re-run to new positions.	0 days	Tue 02/07/19 12:21	Tue 02/07/19 12:21	26						
28	PLJR 1192m @75m/hr (including anchor moves)	15.9 hrs	Tue 02/07/19 12:21	Wed 03/07/19 04:15	27						
29	Partially Dismantle VI	4 hrs	Wed 03/07/19 04:15	Wed 03/07/19 08:15	28						
30	Pick up anchors, connect tow and clear	4 hrs	Wed 03/07/19 08:15	Wed 03/07/19 12:15	29						
31	Contingency for crossing Navigation Channel due to traffic and/or night time res	1 day	Wed 03/07/19 12:15	Thu 04/07/19 12:15	30						
32	Contingency for Obstruction Removal (if required)	2 days	Thu 04/07/19 12:15	Sat 06/07/19 12:15	31						
33	Pre Lay Run 2nd Cable	2.09 days	Sat 06/07/19 12:15	Mon 08/07/19 14:30							
34	Transit from NJ Site to Delaware Landing Site	2 hrs	Sat 06/07/19 12:15	Sat 06/07/19 14:15	32						
35	Set up anchor spread	4 hrs	Sat 06/07/19 14:15	Sat 06/07/19 18:15	34						
36	Build VI	6 hrs	Sat 06/07/19 18:15	Sun 07/07/19 00:15	35						
37	PLJR 519m @150m/hr (NO anchor moves) to HOLD POINT 1.	3.5 hrs	Sun 07/07/19 00:15	Sun 07/07/19 03:45	36						
38	Hold Point 1 - Contact Authorities and gain permission to run anchors across Navigation Channel.	0 days	Sun 07/07/19 03:45	Sun 07/07/19 03:45	37						
39	PLJR 428m @75m/hr (including anchor moves) to HOLD POINT 2. Barge at West edge of Navigation Channel. During this skid pattern Spuds can be deployed and FWD anchor wires slackened to seabed if required to allow vessels to pass (1 hour notice required)	5.75 hrs	Sun 07/07/19 03:45	Sun 07/07/19 09:30	38						
40	Hold Point 2 - Barge at West edge of Navigation Channel. Anchors re-run to new positions.	0 days	Sun 07/07/19 09:30	Sun 07/07/19 09:30	39						
41	PLJR 476m @150m/hr (NO anchor moves) across the Navigation Channel to HOLD POINT 3. Depth of Water too deep to deploy Spuds.	3.2 hrs	Sun 07/07/19 09:30	Sun 07/07/19 12:42	40						
42	Hold Point 3 - Barge clear at East edge of Navigation Channel. Spuds can be deployed and AFT anchor wires slackened to seabed if required to allow vessels to pass (1 hour notice required)	0 days	Sun 07/07/19 12:42	Sun 07/07/19 12:42	41						
43	PLJR 190m @100m/hr (FWD anchor moves) up to Navigation Channel to HOLD POINT 4. During this skid pattern Spuds can be deployed and AFT anchor wires slackened to seabed if required to allow vessels to pass (1 hour	1.9 hrs	Sun 07/07/19 12:42	Sun 07/07/19 14:36	42						
44	Hold Point 4 - Last anchor cleared from Navigation Channel. Anchors re-run to new positions.	0 days	Sun 07/07/19 14:36	Sun 07/07/19 14:36	43						
45	PLJR 1192m @75m/hr (including anchor moves)	15.9 hrs	Sun 07/07/19 14:36	Mon 08/07/19 06:30	44						
46	Partially Dismantle VI	4 hrs	Mon 08/07/19 06:30	Mon 08/07/19 10:30	45						
47	Pick up anchors, connect tow and clear	4 hrs	Mon 08/07/19 10:30	Mon 08/07/19 14:30	46						
48	Contingency for crossing Navigation Channel due to traffic and/or night time res	1 day	Mon 08/07/19 14:30	Tue 09/07/19 14:30	47						
49	Contingency for Obstruction Removal (if required)	2 days	Tue 09/07/19 14:30	Thu 11/07/19 14:30	48						



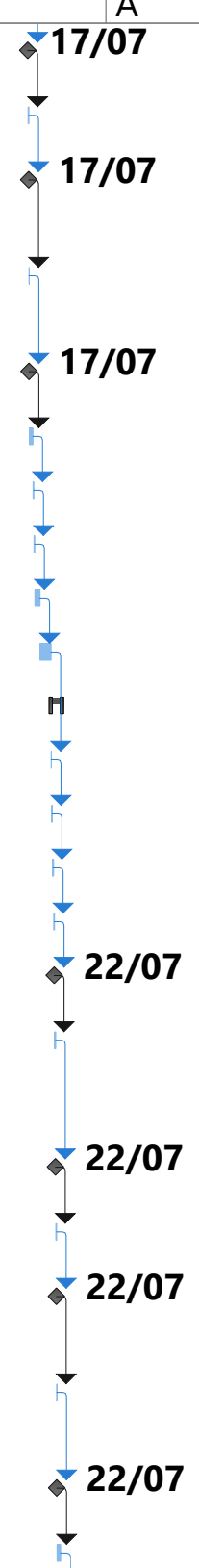
Project: ULISSE Date: Thu 07/02/19 23:20	Task		Project Summary		Manual Task		Start-only		Deadline	
	Split		Inactive Task		Duration-only		Finish-only		Progress	
	Milestone		Inactive Milestone		Manual Summary Rollup		External Tasks		Manual Progress	
	Summary		Inactive Summary		Manual Summary		External Milestone			

ID	Task Name	Duration	Start	Finish	Predecessor	M	J	J	A	S	O
50	Pre Lay Run 3rd Cable	2.09 days	Thu 11/07/19 14:30	Sat 13/07/19 16:45							
51	Transit from NJ Site to Delaware Landing Site	2 hrs	Thu 11/07/19 14:30	Thu 11/07/19 16:30	49						
52	Set up anchor spread	4 hrs	Thu 11/07/19 16:30	Thu 11/07/19 20:30	51						
53	Build VI	6 hrs	Thu 11/07/19 20:30	Fri 12/07/19 02:30	52						
54	PLJR 519m @150m/hr (NO anchor moves) to HOLD POINT 1.	3.5 hrs	Fri 12/07/19 02:30	Fri 12/07/19 06:00	53						
55	Hold Point 1 - Contact Authorities and gain permission to run anchors across Navigation Channel.	0 days	Fri 12/07/19 06:00	Fri 12/07/19 06:00	54						
56	PLJR 428m @75m/hr (including anchor moves) to HOLD POINT 2. Barge at West edge of Navigation Channel. During this skid pattern Spuds can be deployed and FWD anchor wires slackened to seabed if required to allow vessels to pass (1 hour notice required)	5.75 hrs	Fri 12/07/19 06:00	Fri 12/07/19 11:45	55						
57	Hold Point 2 - Barge at West edge of Navigation Channel. Anchors re-run to new positions.	0 days	Fri 12/07/19 11:45	Fri 12/07/19 11:45	56						
58	PLJR 476m @150m/hr (NO anchor moves) across the Navigation Channel to HOLD POINT 3. Depth of Water too deep to deploy Spuds.	3.2 hrs	Fri 12/07/19 11:45	Fri 12/07/19 14:57	57						
59	Hold Point 3 - Barge clear at East edge of Navigation Channel. Spuds can be deployed and AFT anchor wires slackened to seabed if required to allow vessels to pass (1 hour notice required)	0 days	Fri 12/07/19 14:57	Fri 12/07/19 14:57	58						
60	PLJR 190m @100m/hr (FWD anchor moves) up to Navigation Channel to HOLD POINT 4. During this skid pattern Spuds can be deployed and AFT anchor wires slackened to seabed if required to allow vessels to pass (1 hour notice required)	1.9 hrs	Fri 12/07/19 14:57	Fri 12/07/19 16:51	59						
61	Hold Point 4 - Last anchor cleared from Navigation Channel. Anchors re-run to new positions.	0 days	Fri 12/07/19 16:51	Fri 12/07/19 16:51	60						
62	PLJR 1192m @75m/hr (including anchor moves)	15.9 hrs	Fri 12/07/19 16:51	Sat 13/07/19 08:45	61						
63	Partially Dismantle VI	4 hrs	Sat 13/07/19 08:45	Sat 13/07/19 12:45	62						
64	Pick up anchors, connect tow and clear	4 hrs	Sat 13/07/19 12:45	Sat 13/07/19 16:45	63						
65	Contingency for crossing Navigation Channel due to traffic and/or night time restrictions	1 day	Sat 13/07/19 16:45	Sun 14/07/19 16:45	64						
66	Contingency for Obstruction Removal (if required)	2 days	Sun 14/07/19 16:45	Tue 16/07/19 16:45	65						
67	Pre Lay Run 4th Cable	2.09 days	Tue 16/07/19 16:45	Thu 18/07/19 19:00							
68	Transit from NJ Site to Delaware Landing Site	2 hrs	Tue 16/07/19 16:45	Tue 16/07/19 18:45	66						
69	Set up anchor spread	4 hrs	Tue 16/07/19 18:45	Tue 16/07/19 22:45	68						
70	Build VI	6 hrs	Tue 16/07/19 22:45	Wed 17/07/19 04:45	69						
71	PLJR 519m @150m/hr (NO anchor moves) to HOLD POINT 1.	3.5 hrs	Wed 17/07/19 04:45	Wed 17/07/19 08:15	70						
72	Hold Point 1 - Contact Authorities and gain permission to run anchors across Navigation Channel.	0 days	Wed 17/07/19 08:15	Wed 17/07/19 08:15	71						
73	PLJR 428m @75m/hr (including anchor moves) to HOLD POINT 2. Barge at West edge of Navigation Channel. During this skid pattern Spuds can be deployed and FWD anchor wires slackened to seabed if required to allow vessels to pass (1 hour notice required)	5.75 hrs	Wed 17/07/19 08:15	Wed 17/07/19 14:00	72						



Project: ULISSE Date: Thu 07/02/19 23:20	Task		Project Summary		Manual Task		Start-only		Deadline	
	Split		Inactive Task		Duration-only		Finish-only		Progress	
	Milestone		Inactive Milestone		Manual Summary Rollup		External Tasks		Manual Progress	
	Summary		Inactive Summary		Manual Summary		External Milestone			

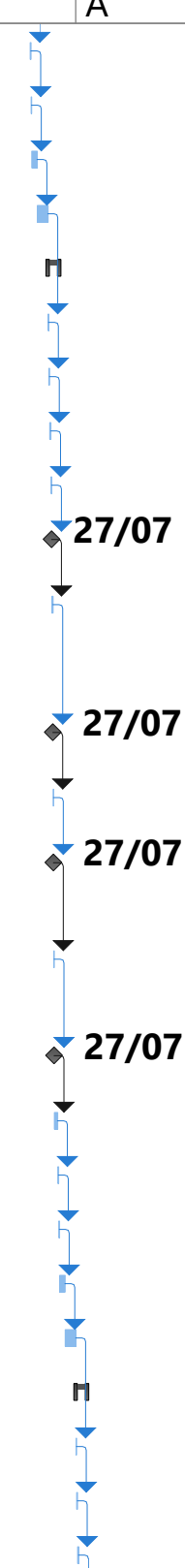
ID	Task Name	Duration	Start	Finish	Predecessor	M	J	J	A	S	O
74	Hold Point 2 - Barge at West edge of Navigation Channel. Anchors re-run to new positions.	0 days	Wed 17/07/19 14:00	Wed 17/07/19 14:00	73				17/07		
75	PLJR 476m @150m/hr (NO anchor moves) across the Navigation Channel to HOLD POINT 3. Depth of Water too deep to deploy Spuds.	3.2 hrs	Wed 17/07/19 14:00	Wed 17/07/19 17:12	74						
76	Hold Point 3 - Barge clear at East edge of Navigation Channel. Spuds can be deployed and AFT anchor wires slacked to seabed if required to allow vessels to pass (1 hour notice required)	0 days	Wed 17/07/19 17:12	Wed 17/07/19 17:12	75				17/07		
77	PLJR 190m @100m/hr (FWD anchor moves) up to Navigation Channel to HOLD POINT 4. During this skid pattern Spuds can be deployed and AFT anchor wires slacked to seabed if required to allow vessels to pass (1 hour notice required)	1.9 hrs	Wed 17/07/19 17:12	Wed 17/07/19 19:06	76						
78	Hold Point 4 - Last anchor cleared from Navigation Channel. Anchors re-run to new positions.	0 days	Wed 17/07/19 19:06	Wed 17/07/19 19:06	77				17/07		
79	PLJR 1192m @75m/hr (including anchor moves)	15.9 hrs	Wed 17/07/19 19:06	Thu 18/07/19 11:00	78						
80	Partially Dismantle VI	4 hrs	Thu 18/07/19 11:00	Thu 18/07/19 15:00	79						
81	Pick up anchors, connect tow and clear	4 hrs	Thu 18/07/19 15:00	Thu 18/07/19 19:00	80						
82	Contingency for crossing Navigation Channel due to traffic and/or night time restrictions	1 day	Thu 18/07/19 19:00	Fri 19/07/19 19:00	81						
83	Contingency for Obstruction Removal (if required)	2 days	Fri 19/07/19 19:00	Sun 21/07/19 19:00	82						
84	Pre Lay Run 5th Cable	2.09 days	Sun 21/07/19 19:00	Tue 23/07/19 21:15							
85	Transit from NJ Site to Delaware Landing Site	2 hrs	Sun 21/07/19 19:00	Sun 21/07/19 21:00	83						
86	Set up anchor spread	4 hrs	Sun 21/07/19 21:00	Mon 22/07/19 01:00	85						
87	Build VI	6 hrs	Mon 22/07/19 01:00	Mon 22/07/19 07:00	86						
88	PLJR 519m @150m/hr (NO anchor moves) to HOLD POINT 1.	3.5 hrs	Mon 22/07/19 07:00	Mon 22/07/19 10:30	87						
89	Hold Point 1 - Contact Authorities and gain permission to run anchors across Navigation Channel.	0 days	Mon 22/07/19 10:30	Mon 22/07/19 10:30	88				22/07		
90	PLJR 428m @75m/hr (including anchor moves) to HOLD POINT 2. Barge at West edge of Navigation Channel. During this skid pattern Spuds can be deployed and FWD anchor wires slacked to seabed if required to allow vessels to pass (1 hour notice required)	5.75 hrs	Mon 22/07/19 10:30	Mon 22/07/19 16:15	89						
91	Hold Point 2 - Barge at West edge of Navigation Channel. Anchors re-run to new positions.	0 days	Mon 22/07/19 16:15	Mon 22/07/19 16:15	90				22/07		
92	PLJR 476m @150m/hr (NO anchor moves) across the Navigation Channel to HOLD POINT 3. Depth of Water too deep to deploy Spuds.	3.2 hrs	Mon 22/07/19 16:15	Mon 22/07/19 19:27	91						
93	Hold Point 3 - Barge clear at East edge of Navigation Channel. Spuds can be deployed and AFT anchor wires slacked to seabed if required to allow vessels to pass (1 hour notice required)	0 days	Mon 22/07/19 19:27	Mon 22/07/19 19:27	92				22/07		
94	PLJR 190m @100m/hr (FWD anchor moves) up to Navigation Channel to HOLD POINT 4. During this skid pattern Spuds can be deployed and AFT anchor wires slacked to seabed if required to allow vessels to pass (1 hour notice required)	1.9 hrs	Mon 22/07/19 19:27	Mon 22/07/19 21:21	93						
95	Hold Point 4 - Last anchor cleared from Navigation Channel. Anchors re-run to new positions.	0 days	Mon 22/07/19 21:21	Mon 22/07/19 21:21	94				22/07		
96	PLJR 1192m @75m/hr (including anchor moves)	15.9 hrs	Mon 22/07/19 21:21	Tue 23/07/19 13:15	95						



Project: ULISSE
Date: Thu 07/02/19 23:20

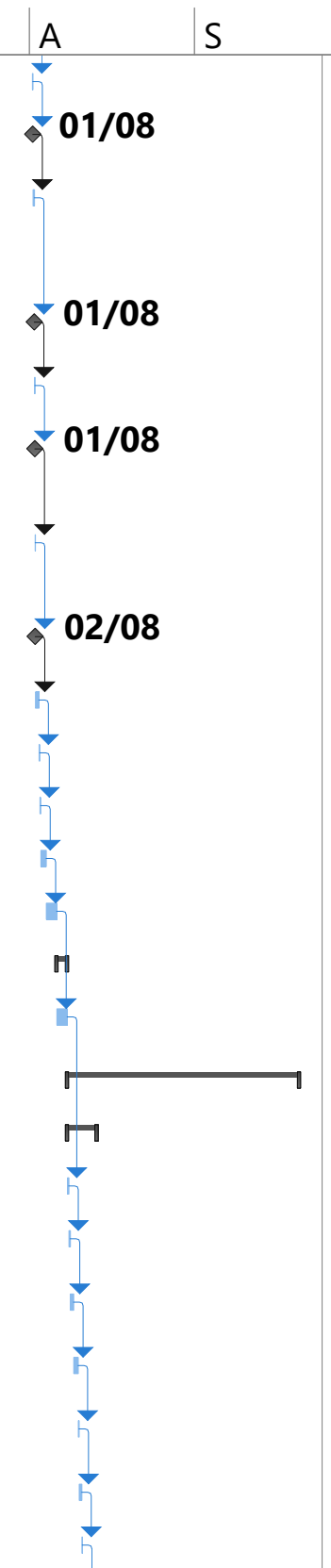
Task		Project Summary		Manual Task		Start-only		Deadline	
Split		Inactive Task		Duration-only		Finish-only		Progress	
Milestone		Inactive Milestone		Manual Summary Rollup		External Tasks		Manual Progress	
Summary		Inactive Summary		Manual Summary		External Milestone			

ID	Task Name	Duration	Start	Finish	Predecessor	M	J	J	A	S	O
97	Partially Dismantle VI	4 hrs	Tue 23/07/19 13:15	Tue 23/07/19 17:15	96						
98	Pick up anchors, connect tow and clear	4 hrs	Tue 23/07/19 17:15	Tue 23/07/19 21:15	97						
99	Contingency for crossing Navigation Channel due to traffic and/or night time res	1 day	Tue 23/07/19 21:15	Wed 24/07/19 21:15	98						
100	Contingency for Obstruction Removal (if required)	2 days	Wed 24/07/19 21:15	Fri 26/07/19 21:15	99						
101	Pre Lay Run 6th Cable	2.09 days	Fri 26/07/19 21:15	Sun 28/07/19 23:30							
102	Transit from NJ Site to Delaware Landing Site	2 hrs	Fri 26/07/19 21:15	Fri 26/07/19 23:15	100						
103	Set up anchor spread	4 hrs	Fri 26/07/19 23:15	Sat 27/07/19 03:15	102						
104	Build VI	6 hrs	Sat 27/07/19 03:15	Sat 27/07/19 09:15	103						
105	PLJR 519m @150m/hr (NO anchor moves) to HOLD POINT 1.	3.5 hrs	Sat 27/07/19 09:15	Sat 27/07/19 12:45	104						
106	Hold Point 1 - Contact Authorities and gain permission to run anchors across Navigation Channel.	0 days	Sat 27/07/19 12:45	Sat 27/07/19 12:45	105						
107	PLJR 428m @75m/hr (including anchor moves) to HOLD POINT 2. Barge at West edge of Navigation Channel. During this skid pattern Spuds can be deployed and FWD anchor wires slackened to seabed if required to allow vessels to pass (1 hour notice required)	5.75 hrs	Sat 27/07/19 12:45	Sat 27/07/19 18:30	106						
108	Hold Point 2 - Barge at West edge of Navigation Channel. Anchors re-run to new positions.	0 days	Sat 27/07/19 18:30	Sat 27/07/19 18:30	107						
109	PLJR 476m @150m/hr (NO anchor moves) across the Navigation Channel to HOLD POINT 3. Depth of Water too deep to deploy Spuds.	3.2 hrs	Sat 27/07/19 18:30	Sat 27/07/19 21:42	108						
110	Hold Point 3 - Barge clear at East edge of Navigation Channel. Spuds can be deployed and AFT anchor wires slackened to seabed if required to allow vessels to pass (1 hour notice required)	0 days	Sat 27/07/19 21:42	Sat 27/07/19 21:42	109						
111	PLJR 190m @100m/hr (FWD anchor moves) up to Navigation Channel to HOLD POINT 4. During this skid pattern Spuds can be deployed and AFT anchor wires slackened to seabed if required to allow vessels to pass (1 hour	1.9 hrs	Sat 27/07/19 21:42	Sat 27/07/19 23:36	110						
112	Hold Point 4 - Last anchor cleared from Navigation Channel. Anchors re-run to new positions.	0 days	Sat 27/07/19 23:36	Sat 27/07/19 23:36	111						
113	PLJR 1192m @75m/hr (including anchor moves)	15.9 hrs	Sat 27/07/19 23:36	Sun 28/07/19 15:30	112						
114	Partially Dismantle VI	4 hrs	Sun 28/07/19 15:30	Sun 28/07/19 19:30	113						
115	Pick up anchors, connect tow and clear	4 hrs	Sun 28/07/19 19:30	Sun 28/07/19 23:30	114						
116	Contingency for crossing Navigation Channel due to traffic and/or night time res	1 day	Sun 28/07/19 23:30	Mon 29/07/19 23:30	115						
117	Contingency for Obstruction Removal (if required)	2 days	Mon 29/07/19 23:30	Wed 31/07/19 23:30	116						
118	Pre Lay Run 7th Cable	2.09 days	Wed 31/07/19 23:30	Sat 03/08/19 01:45							
119	Transit from NJ Site to Delaware Landing Site	2 hrs	Wed 31/07/19 23:30	Thu 01/08/19 01:30	117						
120	Set up anchor spread	4 hrs	Thu 01/08/19 01:30	Thu 01/08/19 05:30	119						
121	Build VI	6 hrs	Thu 01/08/19 05:30	Thu 01/08/19 11:30	120						



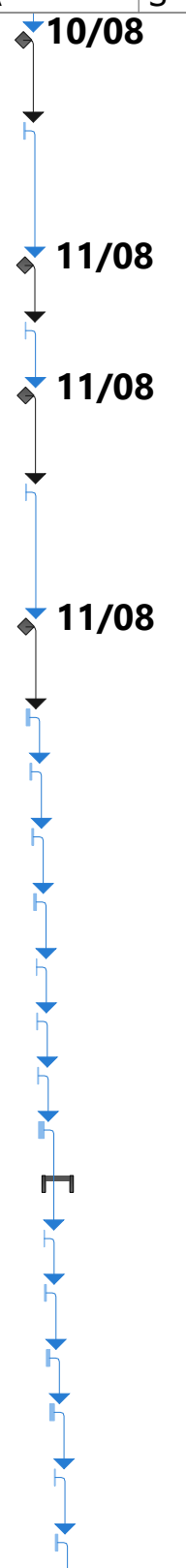
Project: ULISSE Date: Thu 07/02/19 23:20	Task		Project Summary		Manual Task		Start-only		Deadline	
	Split		Inactive Task		Duration-only		Finish-only		Progress	
	Milestone		Inactive Milestone		Manual Summary Rollup		External Tasks		Manual Progress	
	Summary		Inactive Summary		Manual Summary		External Milestone			

ID	Task Name	Duration	Start	Finish	Predecessor	M	J	J	A	S	O
122	PLJR 519m @150m/hr (NO anchor moves) to HOLD POINT 1.	3.5 hrs	Thu 01/08/19 11:30	Thu 01/08/19 15:00	121						
123	Hold Point 1 - Contact Authorities and gain permission to run anchors across Navigation Channel.	0 days	Thu 01/08/19 15:00	Thu 01/08/19 15:00	122						
124	PLJR 428m @75m/hr (including anchor moves) to HOLD POINT 2. Barge at West edge of Navigation Channel. During this skid pattern Spuds can be deployed and FWD anchor wires slackened to seabed if required to allow vessels to pass (1 hour notice required)	5.75 hrs	Thu 01/08/19 15:00	Thu 01/08/19 20:45	123						
125	Hold Point 2 - Barge at West edge of Navigation Channel. Anchors re-run to new positions.	0 days	Thu 01/08/19 20:45	Thu 01/08/19 20:45	124						
126	PLJR 476m @150m/hr (NO anchor moves) across the Navigation Channel to HOLD POINT 3. Depth of Water too deep to deploy Spuds.	3.2 hrs	Thu 01/08/19 20:45	Thu 01/08/19 23:57	125						
127	Hold Point 3 - Barge clear at East edge of Navigation Channel. Spuds can be deployed and AFT anchor wires slackened to seabed if required to allow vessels to pass (1 hour notice required)	0 days	Thu 01/08/19 23:57	Thu 01/08/19 23:57	126						
128	PLJR 190m @100m/hr (FWD anchor moves) up to Navigation Channel to HOLD POINT 4. During this skid pattern Spuds can be deployed and AFT anchor wires slackened to seabed if required to allow vessels to pass (1 hour notice required)	1.9 hrs	Thu 01/08/19 23:57	Fri 02/08/19 01:51	127						
129	Hold Point 4 - Last anchor cleared from Navigation Channel. Anchors re-run to new positions.	0 days	Fri 02/08/19 01:51	Fri 02/08/19 01:51	128						
130	PLJR 1192m @75m/hr (including anchor moves)	15.9 hrs	Fri 02/08/19 01:51	Fri 02/08/19 17:45	129						
131	Partially Dismantle VI	4 hrs	Fri 02/08/19 17:45	Fri 02/08/19 21:45	130						
132	Pick up anchors, connect tow and clear	4 hrs	Fri 02/08/19 21:45	Sat 03/08/19 01:45	131						
133	Contingency for crossing Navigation Channel due to traffic and/or night time restrictions	1 day	Sat 03/08/19 01:45	Sun 04/08/19 01:45	132						
134	Contingency for Obstruction Removal (if required)	2 days	Sun 04/08/19 01:45	Tue 06/08/19 01:45	133						
135	Port Call	2 days	Tue 06/08/19 01:45	Thu 08/08/19 01:45							
136	De-mobilise Vertical Injector (VI 320) and mobilise Vertical Injector (VI 225). Load stores and fuel as required.	2 days	Tue 06/08/19 01:45	Thu 08/08/19 01:45	134						
137	Cable Installation	43.61 days	Thu 08/08/19 01:45	Fri 20/09/19 16:30							
138	1st Cable Installation	5.55 days	Thu 08/08/19 01:45	Tue 13/08/19 15:00							
139	Transit from Wilmington to Delaware Landing Site	6 hrs	Thu 08/08/19 01:45	Thu 08/08/19 07:45	136						
140	CLB Set up anchor spread, move into position, SPUD down and recover nearshore anchor wires.	8 hrs	Thu 08/08/19 07:45	Thu 08/08/19 15:45	139						
141	Power Cable & FO Cable Pull-in Operations (Bundled) (approx. 1300m), including cable hang off attachments	15 hrs	Thu 08/08/19 15:45	Fri 09/08/19 06:45	140						
142	Intermediate Barge surface lay to CLB @ 50m/hr (including spudding down and anchor line moves) (approx. 1200m).	20 hrs	Fri 09/08/19 06:45	Sat 10/08/19 02:45	141						
143	Unload cable bight from Intermediate Barge. (CLB transfer cable from chute to VI Quadrant and IB rig 3-leg lift).	4 hrs	Sat 10/08/19 02:45	Sat 10/08/19 06:45	142						
144	Build VI and load Cable. Divers to remove final floats on cable.	12 hrs	Sat 10/08/19 06:45	Sat 10/08/19 18:45	143						
145	Cable Installation 519m @150m/hr (NO anchor moves) to HOLD POINT 1.	3.5 hrs	Sat 10/08/19 18:45	Sat 10/08/19 22:15	144						



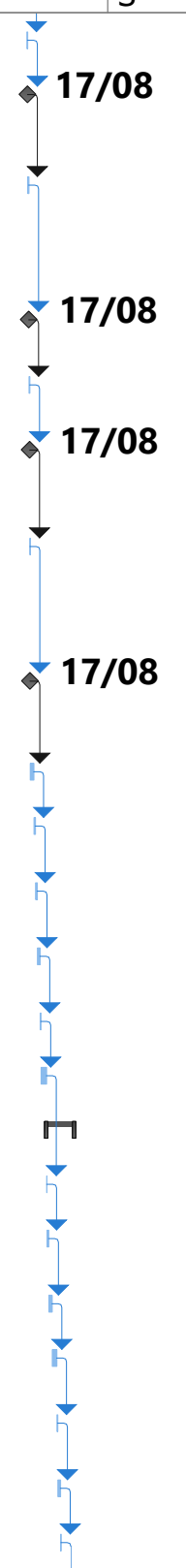
Project: ULISSE Date: Thu 07/02/19 23:20	Task		Project Summary		Manual Task		Start-only		Deadline	
	Split		Inactive Task		Duration-only		Finish-only		Progress	
	Milestone		Inactive Milestone		Manual Summary Rollup		External Tasks		Manual Progress	
	Summary		Inactive Summary		Manual Summary		External Milestone			

ID	Task Name	Duration	Start	Finish	Predecessor	M	J	J	A	S	O
146	Hold Point 1 - Contact Authorities and gain permission to run anchors across Navigation Channel.	0 days	Sat 10/08/19 22:15	Sat 10/08/19 22:15	145				10/08		
147	Cable Installation 428m @75m/hr (inc. anchor moves) to HOLD POINT 2. Barge at West edge of Nav Channel. During this skid pattern Spuds can be deployed and FWD anchor wires slacked to seabed if required to allow vessels to pass (1 hour notice required)	5.75 hrs	Sat 10/08/19 22:15	Sun 11/08/19 04:00	146						
148	Hold Point 2 - Barge at West edge of Navigation Channel. Anchors re-run to new positions.	0 days	Sun 11/08/19 04:00	Sun 11/08/19 04:00	147				11/08		
149	Cable Installation 476m @150m/hr (NO anchor moves) across the Navigation Channel to HOLD POINT 3. Depth of Water too deep to deploy Spuds.	3.2 hrs	Sun 11/08/19 04:00	Sun 11/08/19 07:12	148						
150	Hold Point 3 - Barge clear at East edge of Navigation Channel. Spuds can be deployed and AFT anchor wires slacked to seabed if required to allow vessels to pass (1 hour notice required)	0 days	Sun 11/08/19 07:12	Sun 11/08/19 07:12	149				11/08		
151	Cable Installation 190m @100m/hr (FWD anchor moves) up to Nav Channel to HOLD POINT 4. During this skid pattern Spuds can be deployed and AFT anchor wires slacked to seabed if required to allow vessels to pass (1 hour notice required)	1.9 hrs	Sun 11/08/19 07:12	Sun 11/08/19 09:06	150						
152	Hold Point 4 - Last anchor cleared from Navigation Channel. Anchors re-run to new positions.	0 days	Sun 11/08/19 09:06	Sun 11/08/19 09:06	151				11/08		
153	Cable Installation 1192m @75m/hr (including anchor moves)	15.9 hrs	Sun 11/08/19 09:06	Mon 12/08/19 01:00	152						
154	Unload cable from VI and attach seabed stopper before placing cable on chute. Dismantle VI. Run anchor lines to shore side anchor points.	8 hrs	Mon 12/08/19 01:00	Mon 12/08/19 09:00	153						
155	Attach floats to cable and set up for Omega Operation (Turn barge 90 degree). Run shore winch line out to Barge.	8 hrs	Mon 12/08/19 09:00	Mon 12/08/19 17:00	154						
156	2nd end Omega Float and Power Cable pull in operation. Support Craft to manage Omega bight of cable.	12 hrs	Mon 12/08/19 17:00	Tue 13/08/19 05:00	155						
157	FO Cable Turnover onboard Barge. Re-run shore winch line out to Barge.	2 hrs	Tue 13/08/19 05:00	Tue 13/08/19 07:00	156						
158	FO Cable Direct Pull-in	4 hrs	Tue 13/08/19 07:00	Tue 13/08/19 11:00	157						
159	Pick up anchors, connect tow and clear	4 hrs	Tue 13/08/19 11:00	Tue 13/08/19 15:00	158						
160	Contingency for crossing Navigation Channel due to traffic and/or night time res	1 day	Tue 13/08/19 15:00	Wed 14/08/19 15:00	159						
161	2nd Cable Installation	5.14 days	Wed 14/08/19 15:00	Mon 19/08/19 18:15							
162	Transit from NJ Landing Site to Delaware Landing Site	2 hrs	Wed 14/08/19 15:00	Wed 14/08/19 17:00	160						
163	CLB Set up anchor spread, move into position, SPUD down and recover nearshore anchor wires.	8 hrs	Wed 14/08/19 17:00	Thu 15/08/19 01:00	162						
164	Power Cable Pull-in Operations (approx. 1300m), including cable hang off attachment	15 hrs	Thu 15/08/19 01:00	Thu 15/08/19 16:00	163						
165	Intermediate Barge surface lay to CLB @ 50m/hr (including spudding down and anchor line moves) (approx. 1200m).	20 hrs	Thu 15/08/19 16:00	Fri 16/08/19 12:00	164						
166	Unload cable bight from Intermediate Barge. (CLB transfer cable from chute to VI Quadrant and IB rig 3-leg lift).	4 hrs	Fri 16/08/19 12:00	Fri 16/08/19 16:00	165						
167	Build VI and load Cable. Divers to remove final floats on cable.	12 hrs	Fri 16/08/19 16:00	Sat 17/08/19 04:00	166						



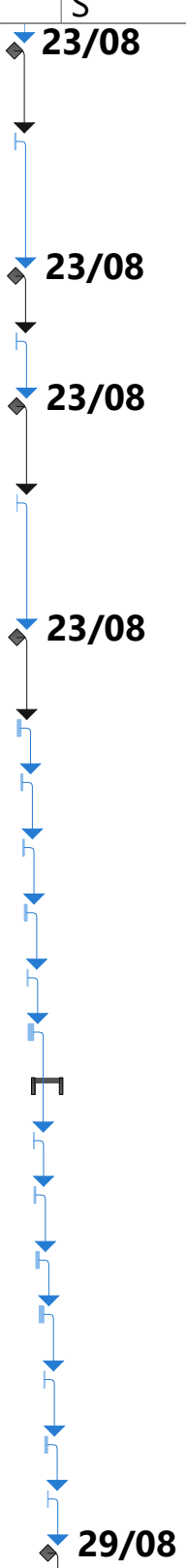
Project: ULISSE Date: Thu 07/02/19 23:20	Task		Project Summary		Manual Task		Start-only		Deadline	
	Split		Inactive Task		Duration-only		Finish-only		Progress	
	Milestone		Inactive Milestone		Manual Summary Rollup		External Tasks		Manual Progress	
	Summary		Inactive Summary		Manual Summary		External Milestone			

ID	Task Name	Duration	Start	Finish	Predecessor	M	J	J	A	S	O
168	Cable Installation 519m @150m/hr (NO anchor moves) to HOLD POINT 1.	3.5 hrs	Sat 17/08/19 04:00	Sat 17/08/19 07:30	167						
169	Hold Point 1 - Contact Authorities and gain permission to run anchors across Navigation Channel.	0 days	Sat 17/08/19 07:30	Sat 17/08/19 07:30	168						
170	Cable Installation 428m @75m/hr (inc. anchor moves) to HOLD POINT 2. Barge at West edge of Nav Channel. During this skid pattern Spuds can be deployed and FWD anchor wires slackened to seabed if required to allow vessels to pass (1 hour notice required)	5.75 hrs	Sat 17/08/19 07:30	Sat 17/08/19 13:15	169						
171	Hold Point 2 - Barge at West edge of Navigation Channel. Anchors re-run to new positions.	0 days	Sat 17/08/19 13:15	Sat 17/08/19 13:15	170						
172	Cable Installation 476m @150m/hr (NO anchor moves) across the Navigation Channel to HOLD POINT 3. Depth of Water too deep to deploy Spuds.	3.2 hrs	Sat 17/08/19 13:15	Sat 17/08/19 16:27	171						
173	Hold Point 3 - Barge clear at East edge of Navigation Channel. Spuds can be deployed and AFT anchor wires slackened to seabed if required to allow vessels to pass (1 hour notice required)	0 days	Sat 17/08/19 16:27	Sat 17/08/19 16:27	172						
174	Cable Installation 190m @100m/hr (FWD anchor moves) up to Nav Channel to HOLD POINT 4. During this skid pattern Spuds can be deployed and AFT anchor wires slackened to seabed if required to allow vessels to pass (1 hour notice required)	1.9 hrs	Sat 17/08/19 16:27	Sat 17/08/19 18:21	173						
175	Hold Point 4 - Last anchor cleared from Navigation Channel. Anchors re-run to new positions.	0 days	Sat 17/08/19 18:21	Sat 17/08/19 18:21	174						
176	Cable Installation 1192m @75m/hr (including anchor moves)	15.9 hrs	Sat 17/08/19 18:21	Sun 18/08/19 10:15	175						
177	Unload cable from VI and attach seabed stopper before placing cable on chute. Dismantle VI. Run anchor lines to shore side anchor points.	8 hrs	Sun 18/08/19 10:15	Sun 18/08/19 18:15	176						
178	Attach floats to cable and set up for Omega Operation (Turn barge 90 degree). Run shore winch line out to Barge.	8 hrs	Sun 18/08/19 18:15	Mon 19/08/19 02:15	177						
179	2nd end Omega Float and Power Cable pull in operation. Support Craft to manage Omega bight of cable.	12 hrs	Mon 19/08/19 02:15	Mon 19/08/19 14:15	178						
180	Pick up anchors, connect tow and clear	4 hrs	Mon 19/08/19 14:15	Mon 19/08/19 18:15	179						
181	Contingency for crossing Navigation Channel due to traffic and/or night time res	1 day	Mon 19/08/19 18:15	Tue 20/08/19 18:15	180						
182	3rd Cable Installation	5.14 days	Tue 20/08/19 18:15	Sun 25/08/19 21:30							
183	Transit from NJ Landing Site to Delaware Landing Site	2 hrs	Tue 20/08/19 18:15	Tue 20/08/19 20:15	181						
184	CLB Set up anchor spread, move into position, SPUD down and recover nearshore anchor wires.	8 hrs	Tue 20/08/19 20:15	Wed 21/08/19 04:15	183						
185	Power Cable Pull-in Operations (approx. 1300m), including cable hang off att	15 hrs	Wed 21/08/19 04:15	Wed 21/08/19 19:15	184						
186	Intermediate Barge surface lay to CLB @ 50m/hr (including spudding down and anchor line moves) (approx. 1200m).	20 hrs	Wed 21/08/19 19:15	Thu 22/08/19 15:15	185						
187	Unload cable bight from Intermediate Barge. (CLB transfer cable from chute to VI Quadrant and IB rig 3-leg lift).	4 hrs	Thu 22/08/19 15:15	Thu 22/08/19 19:15	186						
188	Build VI and load Cable. Divers to remove final floats on cable.	12 hrs	Thu 22/08/19 19:15	Fri 23/08/19 07:15	187						
189	Cable Installation 519m @150m/hr (NO anchor moves) to HOLD POINT 1.	3.5 hrs	Fri 23/08/19 07:15	Fri 23/08/19 10:45	188						



Project: ULISSE Date: Thu 07/02/19 23:20	Task		Project Summary		Manual Task		Start-only		Deadline	
	Split		Inactive Task		Duration-only		Finish-only		Progress	
	Milestone		Inactive Milestone		Manual Summary Rollup		External Tasks		Manual Progress	
	Summary		Inactive Summary		Manual Summary		External Milestone			

ID	Task Name	Duration	Start	Finish	Predecessor	M	J	J	A	S	O
190	Hold Point 1 - Contact Authorities and gain permission to run anchors across Navigation Channel.	0 days	Fri 23/08/19 10:45	Fri 23/08/19 10:45	189					23/08	
191	Cable Installation 428m @75m/hr (inc. anchor moves) to HOLD POINT 2. Barge at West edge of Nav Channel. During this skid pattern Spuds can be deployed and FWD anchor wires slacked to seabed if required to allow vessels to pass (1 hour notice required)	5.75 hrs	Fri 23/08/19 10:45	Fri 23/08/19 16:30	190						
192	Hold Point 2 - Barge at West edge of Navigation Channel. Anchors re-run to new positions.	0 days	Fri 23/08/19 16:30	Fri 23/08/19 16:30	191					23/08	
193	Cable Installation 476m @150m/hr (NO anchor moves) across the Navigation Channel to HOLD POINT 3. Depth of Water too deep to deploy Spuds.	3.2 hrs	Fri 23/08/19 16:30	Fri 23/08/19 19:42	192						
194	Hold Point 3 - Barge clear at East edge of Navigation Channel. Spuds can be deployed and AFT anchor wires slacked to seabed if required to allow vessels to pass (1 hour notice required)	0 days	Fri 23/08/19 19:42	Fri 23/08/19 19:42	193					23/08	
195	Cable Installation 190m @100m/hr (FWD anchor moves) up to Nav Channel to HOLD POINT 4. During this skid pattern Spuds can be deployed and AFT anchor wires slacked to seabed if required to allow vessels to pass (1 hour notice required)	1.9 hrs	Fri 23/08/19 19:42	Fri 23/08/19 21:36	194						
196	Hold Point 4 - Last anchor cleared from Navigation Channel. Anchors re-run to new positions.	0 days	Fri 23/08/19 21:36	Fri 23/08/19 21:36	195					23/08	
197	Cable Installation 1192m @75m/hr (including anchor moves)	15.9 hrs	Fri 23/08/19 21:36	Sat 24/08/19 13:30	196						
198	Unload cable from VI and attach seabed stopper before placing cable on chute. Dismantle VI. Run anchor lines to shore side anchor points.	8 hrs	Sat 24/08/19 13:30	Sat 24/08/19 21:30	197						
199	Attach floats to cable and set up for Omega Operation (Turn barge 90 degree). Run shore winch line out to Barge.	8 hrs	Sat 24/08/19 21:30	Sun 25/08/19 05:30	198						
200	2nd end Omega Float and Power Cable pull in operation. Support Craft to manage Omega bight of cable.	12 hrs	Sun 25/08/19 05:30	Sun 25/08/19 17:30	199						
201	Pick up anchors, connect tow and clear	4 hrs	Sun 25/08/19 17:30	Sun 25/08/19 21:30	200						
202	Contingency for crossing Navigation Channel due to traffic and/or night time res	1 day	Sun 25/08/19 21:30	Mon 26/08/19 21:30	201						
203	4th Cable Installation	5.14 days	Mon 26/08/19 21:30	Sun 01/09/19 00:45							
204	Transit from NJ Landing Site to Delaware Landing Site	2 hrs	Mon 26/08/19 21:30	Mon 26/08/19 23:30	202						
205	CLB Set up anchor spread, move into position, SPUD down and recover nearshore anchor wires.	8 hrs	Mon 26/08/19 23:30	Tue 27/08/19 07:30	204						
206	Power Cable Pull-in Operations (approx. 1300m), including cable hang off att	15 hrs	Tue 27/08/19 07:30	Tue 27/08/19 22:30	205						
207	Intermediate Barge surface lay to CLB @ 50m/hr (including spudding down and anchor line moves) (approx. 1200m).	20 hrs	Tue 27/08/19 22:30	Wed 28/08/19 18:30	206						
208	Unload cable bight from Intermediate Barge. (CLB transfer cable from chute to VI Quadrant and IB rig 3-leg lift).	4 hrs	Wed 28/08/19 18:30	Wed 28/08/19 22:30	207						
209	Build VI and load Cable. Divers to remove final floats on cable.	12 hrs	Wed 28/08/19 22:30	Thu 29/08/19 10:30	208						
210	Cable Installation 519m @150m/hr (NO anchor moves) to HOLD POINT 1.	3.5 hrs	Thu 29/08/19 10:30	Thu 29/08/19 14:00	209						
211	Hold Point 1 - Contact Authorities and gain permission to run anchors across Navigation Channel.	0 days	Thu 29/08/19 14:00	Thu 29/08/19 14:00	210					29/08	

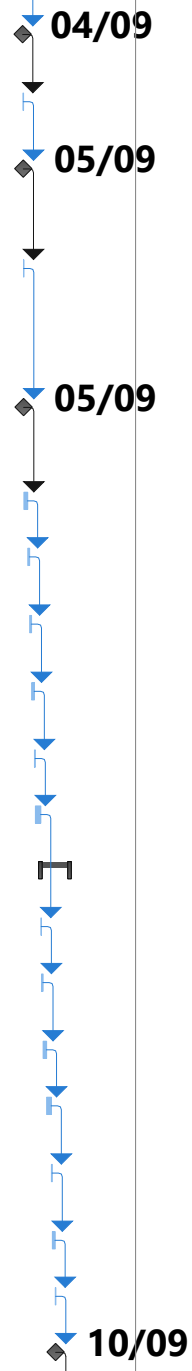


Project: ULISSE Date: Thu 07/02/19 23:20	Task		Project Summary		Manual Task		Start-only		Deadline	
	Split		Inactive Task		Duration-only		Finish-only		Progress	
	Milestone		Inactive Milestone		Manual Summary Rollup		External Tasks		Manual Progress	
	Summary		Inactive Summary		Manual Summary		External Milestone			

ID	Task Name	Duration	Start	Finish	Predecessor	M	J	J	A	S	O
212	Cable Installation 428m @75m/hr (inc. anchor moves) to HOLD POINT 2. Barge at West edge of Nav Channel. During this skid pattern Spuds can be deployed and FWD anchor wires slacked to seabed if required to allow vessels to pass (1 hour notice required)	5.75 hrs	Thu 29/08/19 14:00	Thu 29/08/19 19:45	211						
213	Hold Point 2 - Barge at West edge of Navigation Channel. Anchors re-run to new positions.	0 days	Thu 29/08/19 19:45	Thu 29/08/19 19:45	212					29/08	
214	Cable Installation 476m @150m/hr (NO anchor moves) across the Navigation Channel to HOLD POINT 3. Depth of Water too deep to deploy Spuds.	3.2 hrs	Thu 29/08/19 19:45	Thu 29/08/19 22:57	213					29/08	
215	Hold Point 3 - Barge clear at East edge of Navigation Channel. Spuds can be deployed and AFT anchor wires slacked to seabed if required to allow vessels to pass (1 hour notice required)	0 days	Thu 29/08/19 22:57	Thu 29/08/19 22:57	214						
216	Cable Installation 190m @100m/hr (FWD anchor moves) up to Nav Channel to HOLD POINT 4. During this skid pattern Spuds can be deployed and AFT anchor wires slacked to seabed if required to allow vessels to pass (1 hour notice required)	1.9 hrs	Thu 29/08/19 22:57	Fri 30/08/19 00:51	215						
217	Hold Point 4 - Last anchor cleared from Navigation Channel. Anchors re-run to new positions.	0 days	Fri 30/08/19 00:51	Fri 30/08/19 00:51	216					30/08	
218	Cable Installation 1192m @75m/hr (including anchor moves)	15.9 hrs	Fri 30/08/19 00:51	Fri 30/08/19 16:45	217						
219	Unload cable from VI and attach seabed stopper before placing cable on chute. Dismantle VI. Run anchor lines to shore side anchor points.	8 hrs	Fri 30/08/19 16:45	Sat 31/08/19 00:45	218						
220	Attach floats to cable and set up for Omega Operation (Turn barge 90 degree). Run shore winch line out to Barge.	8 hrs	Sat 31/08/19 00:45	Sat 31/08/19 08:45	219						
221	2nd end Omega Float and Power Cable pull in operation. Support Craft to manage Omega bight of cable.	12 hrs	Sat 31/08/19 08:45	Sat 31/08/19 20:45	220						
222	Pick up anchors, connect tow and clear	4 hrs	Sat 31/08/19 20:45	Sun 01/09/19 00:45	221						
223	Contingency for crossing Navigation Channel due to traffic and/or night time restrictions	1 day	Sun 01/09/19 00:45	Mon 02/09/19 00:45	222						
224	5th Cable Installation	5.14 days	Mon 02/09/19 00:45	Sat 07/09/19 04:00							
225	Transit from NJ Landing Site to Delaware Landing Site	2 hrs	Mon 02/09/19 00:45	Mon 02/09/19 02:45	223						
226	CLB Set up anchor spread, move into position, SPUD down and recover nearshore anchor wires.	8 hrs	Mon 02/09/19 02:45	Mon 02/09/19 10:45	225						
227	Power Cable Pull-in Operations (approx. 1300m), including cable hang off attachment	15 hrs	Mon 02/09/19 10:45	Tue 03/09/19 01:45	226						
228	Intermediate Barge surface lay to CLB @ 50m/hr (including spudding down and anchor line moves) (approx. 1200m).	20 hrs	Tue 03/09/19 01:45	Tue 03/09/19 21:45	227						
229	Unload cable bight from Intermediate Barge. (CLB transfer cable from chute to VI Quadrant and IB rig 3-leg lift).	4 hrs	Tue 03/09/19 21:45	Wed 04/09/19 01:45	228						
230	Build VI and load Cable. Divers to remove final floats on cable.	12 hrs	Wed 04/09/19 01:45	Wed 04/09/19 13:45	229						
231	Cable Installation 519m @150m/hr (NO anchor moves) to HOLD POINT 1.	3.5 hrs	Wed 04/09/19 13:45	Wed 04/09/19 17:15	230						
232	Hold Point 1 - Contact Authorities and gain permission to run anchors across Navigation Channel.	0 days	Wed 04/09/19 17:15	Wed 04/09/19 17:15	231					04/09	

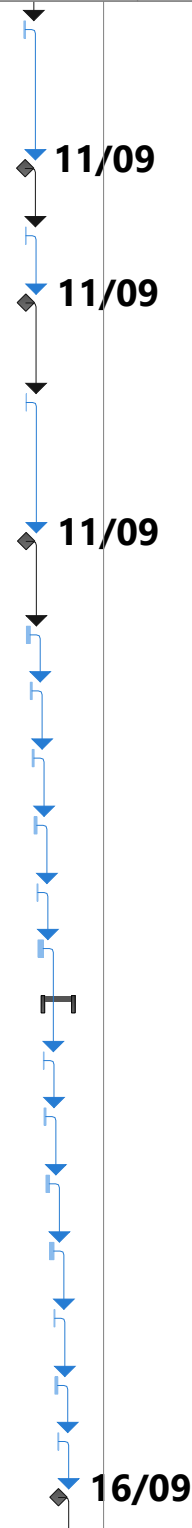
Project: ULISSE Date: Thu 07/02/19 23:20	Task		Project Summary		Manual Task		Start-only		Deadline	
	Split		Inactive Task		Duration-only		Finish-only		Progress	
	Milestone		Inactive Milestone		Manual Summary Rollup		External Tasks		Manual Progress	
	Summary		Inactive Summary		Manual Summary		External Milestone			

ID	Task Name	Duration	Start	Finish	Predecessor	M	J	J	A	S	O
233	Cable Installation 428m @75m/hr (inc. anchor moves) to HOLD POINT 2. Barge at West edge of Nav Channel. During this skid pattern Spuds can be deployed and FWD anchor wires slacked to seabed if required to allow vessels to pass (1 hour notice required)	5.75 hrs	Wed 04/09/19 17:15	Wed 04/09/19 23:00	232						
234	Hold Point 2 - Barge at West edge of Navigation Channel. Anchors re-run to new positions.	0 days	Wed 04/09/19 23:00	Wed 04/09/19 23:00	233						
235	Cable Installation 476m @150m/hr (NO anchor moves) across the Navigation Channel to HOLD POINT 3. Depth of Water too deep to deploy Spuds.	3.2 hrs	Wed 04/09/19 23:00	Thu 05/09/19 02:12	234						
236	Hold Point 3 - Barge clear at East edge of Navigation Channel. Spuds can be deployed and AFT anchor wires slacked to seabed if required to allow vessels to pass (1 hour notice required)	0 days	Thu 05/09/19 02:12	Thu 05/09/19 02:12	235						
237	Cable Installation 190m @100m/hr (FWD anchor moves) up to Nav Channel to HOLD POINT 4. During this skid pattern Spuds can be deployed and AFT anchor wires slacked to seabed if required to allow vessels to pass (1 hour notice required)	1.9 hrs	Thu 05/09/19 02:12	Thu 05/09/19 04:06	236						
238	Hold Point 4 - Last anchor cleared from Navigation Channel. Anchors re-run to new positions.	0 days	Thu 05/09/19 04:06	Thu 05/09/19 04:06	237						
239	Cable Installation 1192m @75m/hr (including anchor moves)	15.9 hrs	Thu 05/09/19 04:06	Thu 05/09/19 20:00	238						
240	Unload cable from VI and attach seabed stopper before placing cable on chute. Dismantle VI. Run anchor lines to shore side anchor points.	8 hrs	Thu 05/09/19 20:00	Fri 06/09/19 04:00	239						
241	Attach floats to cable and set up for Omega Operation (Turn barge 90 degree). Run shore winch line out to Barge.	8 hrs	Fri 06/09/19 04:00	Fri 06/09/19 12:00	240						
242	2nd end Omega Float and Power Cable pull in operation. Support Craft to manage Omega bight of cable.	12 hrs	Fri 06/09/19 12:00	Sat 07/09/19 00:00	241						
243	Pick up anchors, connect tow and clear	4 hrs	Sat 07/09/19 00:00	Sat 07/09/19 04:00	242						
244	Contingency for crossing Navigation Channel due to traffic and/or night time restrictions	1 day	Sat 07/09/19 04:00	Sun 08/09/19 04:00	243						
245	6th Cable Installation	5.14 days	Sun 08/09/19 04:00	Fri 13/09/19 07:15							
246	Transit from NJ Landing Site to Delaware Landing Site	2 hrs	Sun 08/09/19 04:00	Sun 08/09/19 06:00	244						
247	CLB Set up anchor spread, move into position, SPUD down and recover nearshore anchor wires.	8 hrs	Sun 08/09/19 06:00	Sun 08/09/19 14:00	246						
248	Power Cable Pull-in Operations (approx. 1300m), including cable hang off attachment	15 hrs	Sun 08/09/19 14:00	Mon 09/09/19 05:00	247						
249	Intermediate Barge surface lay to CLB @ 50m/hr (including spudding down and anchor line moves) (approx. 1200m).	20 hrs	Mon 09/09/19 05:00	Tue 10/09/19 01:00	248						
250	Unload cable bight from Intermediate Barge. (CLB transfer cable from chute to VI Quadrant and IB rig 3-leg lift).	4 hrs	Tue 10/09/19 01:00	Tue 10/09/19 05:00	249						
251	Build VI and load Cable. Divers to remove final floats on cable.	12 hrs	Tue 10/09/19 05:00	Tue 10/09/19 17:00	250						
252	Cable Installation 519m @150m/hr (NO anchor moves) to HOLD POINT 1.	3.5 hrs	Tue 10/09/19 17:00	Tue 10/09/19 20:30	251						
253	Hold Point 1 - Contact Authorities and gain permission to run anchors across Navigation Channel.	0 days	Tue 10/09/19 20:30	Tue 10/09/19 20:30	252						



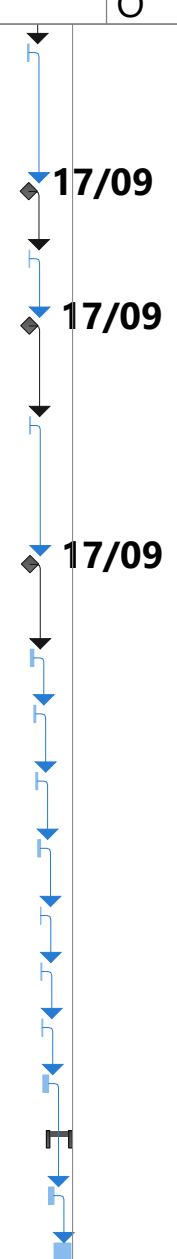
Project: ULISSE Date: Thu 07/02/19 23:20	Task		Project Summary		Manual Task		Start-only		Deadline	
	Split		Inactive Task		Duration-only		Finish-only		Progress	
	Milestone		Inactive Milestone		Manual Summary Rollup		External Tasks		Manual Progress	
	Summary		Inactive Summary		Manual Summary		External Milestone			

ID	Task Name	Duration	Start	Finish	Predecessor	M	J	J	A	S	O
254	Cable Installation 428m @75m/hr (inc. anchor moves) to HOLD POINT 2. Barge at West edge of Nav Channel. During this skid pattern Spuds can be deployed and FWD anchor wires slackened to seabed if required to allow vessels to pass (1 hour notice required)	5.75 hrs	Tue 10/09/19 20:30	Wed 11/09/19 02:15	253						
255	Hold Point 2 - Barge at West edge of Navigation Channel. Anchors re-run to new positions.	0 days	Wed 11/09/19 02:15	Wed 11/09/19 02:15	254						11/09
256	Cable Installation 476m @150m/hr (NO anchor moves) across the Navigation Channel to HOLD POINT 3. Depth of Water too deep to deploy Spuds.	3.2 hrs	Wed 11/09/19 02:15	Wed 11/09/19 05:27	255						11/09
257	Hold Point 3 - Barge clear at East edge of Navigation Channel. Spuds can be deployed and AFT anchor wires slackened to seabed if required to allow vessels to pass (1 hour notice required)	0 days	Wed 11/09/19 05:27	Wed 11/09/19 05:27	256						11/09
258	Cable Installation 190m @100m/hr (FWD anchor moves) up to Nav Channel to HOLD POINT 4. During this skid pattern Spuds can be deployed and AFT anchor wires slackened to seabed if required to allow vessels to pass (1 hour notice required)	1.9 hrs	Wed 11/09/19 05:27	Wed 11/09/19 07:21	257						11/09
259	Hold Point 4 - Last anchor cleared from Navigation Channel. Anchors re-run to new positions.	0 days	Wed 11/09/19 07:21	Wed 11/09/19 07:21	258						11/09
260	Cable Installation 1192m @75m/hr (including anchor moves)	15.9 hrs	Wed 11/09/19 07:21	Wed 11/09/19 23:15	259						
261	Unload cable from VI and attach seabed stopper before placing cable on chute. Dismantle VI. Run anchor lines to shore side anchor points.	8 hrs	Wed 11/09/19 23:15	Thu 12/09/19 07:15	260						
262	Attach floats to cable and set up for Omega Operation (Turn barge 90 degree). Run shore winch line out to Barge.	8 hrs	Thu 12/09/19 07:15	Thu 12/09/19 15:15	261						
263	2nd end Omega Float and Power Cable pull in operation. Support Craft to manage Omega bight of cable.	12 hrs	Thu 12/09/19 15:15	Fri 13/09/19 03:15	262						
264	Pick up anchors, connect tow and clear	4 hrs	Fri 13/09/19 03:15	Fri 13/09/19 07:15	263						
265	Contingency for crossing Navigation Channel due to traffic and/or night time res	1 day	Fri 13/09/19 07:15	Sat 14/09/19 07:15	264						
266	7th Cable Installation	5.39 days	Sat 14/09/19 07:15	Thu 19/09/19 16:30							
267	Transit from NJ Landing Site to Delaware Landing Site	2 hrs	Sat 14/09/19 07:15	Sat 14/09/19 09:15	265						
268	CLB Set up anchor spread, move into position, SPUD down and recover nearshore anchor wires.	8 hrs	Sat 14/09/19 09:15	Sat 14/09/19 17:15	267						
269	Power Cable & FO Cable Pull-in Operations (Bundled) (approx. 1300m), including cable hang off attachments	15 hrs	Sat 14/09/19 17:15	Sun 15/09/19 08:15	268						
270	Intermediate Barge surface lay to CLB @ 50m/hr (including spudding down and anchor line moves) (approx. 1200m).	20 hrs	Sun 15/09/19 08:15	Mon 16/09/19 04:15	269						
271	Unload cable bight from Intermediate Barge. (CLB transfer cable from chute to VI Quadrant and IB rig 3-leg lift).	4 hrs	Mon 16/09/19 04:15	Mon 16/09/19 08:15	270						
272	Build VI and load Cable. Divers to remove final floats on cable.	12 hrs	Mon 16/09/19 08:15	Mon 16/09/19 20:15	271						
273	Cable Installation 519m @150m/hr (NO anchor moves) to HOLD POINT 1.	3.5 hrs	Mon 16/09/19 20:15	Mon 16/09/19 23:45	272						
274	Hold Point 1 - Contact Authorities and gain permission to run anchors across Navigation Channel.	0 days	Mon 16/09/19 23:45	Mon 16/09/19 23:45	273						16/09



Project: ULISSE Date: Thu 07/02/19 23:20	Task		Project Summary		Manual Task		Start-only		Deadline	
	Split		Inactive Task		Duration-only		Finish-only		Progress	
	Milestone		Inactive Milestone		Manual Summary Rollup		External Tasks		Manual Progress	
	Summary		Inactive Summary		Manual Summary		External Milestone			

ID	Task Name	Duration	Start	Finish	Predecessor	M	J	J	A	S	O
275	Cable Installation 428m @75m/hr (inc. anchor moves) to HOLD POINT 2. Barge at West edge of Nav Channel. During this skid pattern Spuds can be deployed and FWD anchor wires slackened to seabed if required to allow vessels to pass (1 hour notice required)	5.75 hrs	Mon 16/09/19 23:45	Tue 17/09/19 05:30	274						
276	Hold Point 2 - Barge at West edge of Navigation Channel. Anchors re-run to new positions.	0 days	Tue 17/09/19 05:30	Tue 17/09/19 05:30	275						17/09
277	Cable Installation 476m @150m/hr (NO anchor moves) across the Navigation Channel to HOLD POINT 3. Depth of Water too deep to deploy Spuds.	3.2 hrs	Tue 17/09/19 05:30	Tue 17/09/19 08:42	276						17/09
278	Hold Point 3 - Barge clear at East edge of Navigation Channel. Spuds can be deployed and AFT anchor wires slackened to seabed if required to allow vessels to pass (1 hour notice required)	0 days	Tue 17/09/19 08:42	Tue 17/09/19 08:42	277						17/09
279	Cable Installation 190m @100m/hr (FWD anchor moves) up to Nav Channel to HOLD POINT 4. During this skid pattern Spuds can be deployed and AFT anchor wires slackened to seabed if required to allow vessels to pass (1 hour notice required)	1.9 hrs	Tue 17/09/19 08:42	Tue 17/09/19 10:36	278						
280	Hold Point 4 - Last anchor cleared from Navigation Channel. Anchors re-run to new positions.	0 days	Tue 17/09/19 10:36	Tue 17/09/19 10:36	279						17/09
281	Cable Installation 1192m @75m/hr (including anchor moves)	15.9 hrs	Tue 17/09/19 10:36	Wed 18/09/19 02:30	280						
282	Unload cable from VI and attach seabed stopper before placing cable on chute. Dismantle VI. Run anchor lines to shore side anchor points.	8 hrs	Wed 18/09/19 02:30	Wed 18/09/19 10:30	281						
283	Attach floats to cable and set up for Omega Operation (Turn barge 90 degree). Run shore winch line out to Barge.	8 hrs	Wed 18/09/19 10:30	Wed 18/09/19 18:30	282						
284	2nd end Omega Float and Power Cable pull in operation. Support Craft to manage Omega bight of cable.	12 hrs	Wed 18/09/19 18:30	Thu 19/09/19 06:30	283						
285	FO Cable Turnover onboard Barge. Re-run shore winch line out to Barge.	2 hrs	Thu 19/09/19 06:30	Thu 19/09/19 08:30	284						
286	FO Cable Direct Pull-in	4 hrs	Thu 19/09/19 08:30	Thu 19/09/19 12:30	285						
287	Pick up anchors, connect tow and clear	4 hrs	Thu 19/09/19 12:30	Thu 19/09/19 16:30	286						
288	Contingency for crossing Navigation Channel due to traffic and/or night time res	1 day	Thu 19/09/19 16:30	Fri 20/09/19 16:30	287						
289	Transit	4 days	Fri 20/09/19 16:30	Tue 24/09/19 16:30							
290	Transit to Wilmington	1 day	Fri 20/09/19 16:30	Sat 21/09/19 16:30	288						
291	Local Demob and prepare for Semi-sub transport	3 days	Sat 21/09/19 16:30	Tue 24/09/19 16:30	290						



Project: ULISSE
Date: Thu 07/02/19 23:20

Task		Project Summary		Manual Task		Start-only		Deadline	
Split		Inactive Task		Duration-only		Finish-only		Progress	
Milestone		Inactive Milestone		Manual Summary Rollup		External Tasks		Manual Progress	
Summary		Inactive Summary		Manual Summary		External Milestone			