



## **Memorandum**

To: Mariners' Advisory Committee Members and Interested Parties -----  
From: Captain Drew Hodgens  
Re: Meeting Agenda – **December 11, 2025**

Your presence is requested at the Quarterly Meeting of the above-mentioned committee on **Thursday, December 11, 2025 at 1100 hours.**

### **Agenda**

#### **I Approval of Minutes** – from the September 2025 meeting

**Introduction of all in attendance**

#### **II. Reports**

- |   |   |
|---|---|
| A. <b>Treasurer's Report</b>                    | - Capt. Rick Iuliucci   |
| B. <b>Membership Report</b>                     | - Capt. Rick Iuliucci   |
| C. <b>USCG Report</b>                           | - Capt. Kate Higgins-Bloom<br>-Mr. Shawn Carter (NOAA National Weather Service) |
| D. <b>USACE Report</b>                          | - Mr. Tim Rooney, Project Manager, USACE  |
| E. <b>NOAA Report</b>                           | - Mr. Christopher DiVeglio  |
| F. <b>Burlington County Bridge Commission</b>   | - Mr. Michael Ott   |
| G. <b>USCG Chief Petty Officers Association</b> | - Mr. Matthew Whitlow   |

#### **III. Unfinished Business**

#### **IV. New Business**

#### **V. Open Discussion**

#### **VI. Adjournment**

**Next meeting: Thursday, March 12th, 2026 at 1100 hours**



## **Memorandum**

To: Mariners' Advisory Committee Members and Interested Parties  
From: Captain Rick Iuliucci, Treasurer  
Re: Treasurer's Report for December 11, 2025

**Balance – from September 11, 2025** **\$ 13,381.68**

**Deposits** (September 2025- December 2025)

Total Deposits during the period **\$ 800.00**

---

**INCOME BALANCE** **\$ 14,181.68**

**Disbursements** (September 11, 2025 – December 11, 2025)

Popi's Restaurant (9/12/25)	\$ 4,613.45
Email service (G-mail @ 3 months) (increase of \$2.02 per month)	\$ 136.08
Email service (Twild- \$89.95. Per month @3 months)	\$ 269.85
PNC service fees (\$3.00 per month @ 3 months)	\$ 9.00

**-**  
**TOTAL DISBURSEMENTS** (September 2025 – December 2025) **\$ 5,028.38**

**BALANCE as of December 9, 2025** **\$ 9,153.30**

# USACE PHILADELPHIA DISTRICT

## MAC MEETING

MAC Meeting Presentation

Timothy J. Rooney, Project Manager

11 December 2025

*"The views, opinions and findings contained in this report are those of the authors(s) and should not be construed as an official Department of the Army position, policy or decision, unless so designated by other official documentation."*



US Army Corps  
of Engineers®



## Delaware River, Philadelphia to Sea

- Cottrell Contracting Corporation is completed dredging operations of the 40ft side of Marcus Hook Anchorage with the Dredge Lexington in September.
- FY25 maintenance dredging was awarded Norfolk Dredging Company for \$27,690,000. Notice to proceed was issued on 28October2025. Scheduled dredging will include Marcus Hook, Cherry Island, Deepwater Point, and New Castle Ranges. Wilmington Harbor will be the first priority with dredged material being placed in Pedricktown South dredge material placement facility (DMPF). The Delaware City DMPF will be used for Deepwater Point and New Castle Ranges.
- The Hopper Dredge McFarland next tour is scheduled for April 2026 with potential dredging orders being Cross Ledge and/or Mifflin Ranges.



US Army Corps  
of Engineers ®



## **Delaware River, Philadelphia to Trenton**

Dredging between the Turnpike Bridge and Newbold Island as well as the Fairless Turning Basin is currently being conducted by Cottrell Contracting Corp. All work is expected to be completed in early January.

## **Wilmington Harbor**

Norfolk Dredging Company is expected to begin dredging in the Port in early January.

## **Emergency Object Removal**

- Scheduled to be advertised on 22December2025 with proposals received 22January2026.
- 5 year contract which will cover all of the Delaware River channels, C&D Canal, Wilmington Harbor and Schuylkill River.



US Army Corps  
of Engineers ®



# EMERGENCY OBJECT REMOVAL



## Object Removal Regions



- **Region 1:** All Federal waterways within circle between Biles Island PA and Wilmington Harbor DE. Circle Diameter is approx. 45NM.
- **Region 2:** All Federal waterways within circle between Wilmington Harbor DE and Artificial Island NJ including the C&D Canal and Chesapeake Bay to the Sassafas River. Circle Diameter is approx. 30NM.
- **Region 3:** All Federal waterways within circle between Artificial Island and end of Delaware River Federal Channel. Circle Diameter is approx. 50NM.



US Army Corps  
of Engineers ®



## **C & D Canal**

- FY25 Maintenance dredging is expected to remove approximately 500,000 cy of material from the navigation channel. Work will include the removal of material from the Upper Chesapeake, inside the Canal and at the Reedy Point Entrance. Dredged material will be placed in Pearce Creek and Delaware City DMPF. Dredging is expected to start on December 17, 2025.
- Summit Bridge painting and repair activities will continue through October 2026. An air gap restriction of 5ft has been issued until June 2026. Work will only be performed on half of the main span of the bridge leaving the air gap unrestricted on the other side of channel. Currently, work is being performed on the south side of the main channel.



US Army Corps  
of Engineers ®





# **NOAA Physical Oceanographic Real Time System (PORTS®) Updates**

---

**Christopher DiVeglio**  
**NOAA PORTS Program**  
**December 11, 2025**



<https://tidesandcurrents.noaa.gov/ports/index.html?port=db>



# Quarterly Sensor Statistics

---

## Air gap and current meter station Instrument performance stats

09/01/2025-11/30/2025

Delaware Memorial Bridge Air Gap – 100%

Ben Franklin Air Gap – 99%

Reedy Point Air Gap – 99%

Chesapeake City Gap – 100%

- *Timeliness of data*
- *Quality of data*

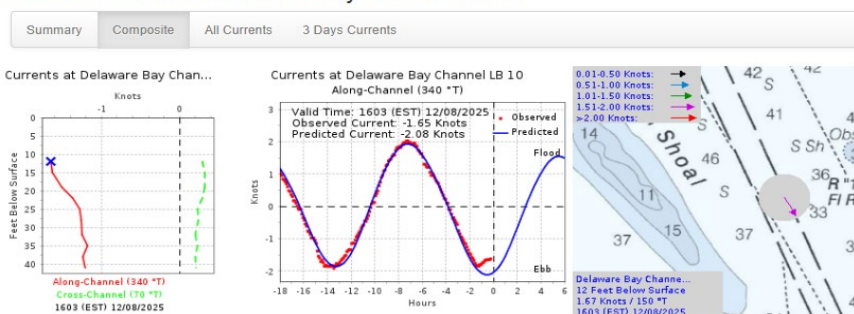
db0301 (Philadelphia) currents – 49% (Back online 10/16)

db0502 (Brown Shoal LB10) currents – 31% (Back online 11/4)

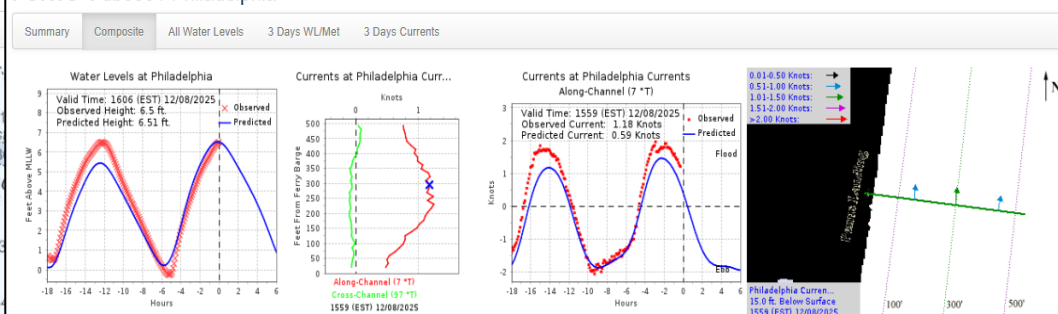
# Significant catch up on maintenance

- All water level/meteorological and currents stations were serviced this fall!
- **Ship John Shoal station:** Battery charging issues addressed, solar panels replaced, water temp sensor replaced, wind data back online
- **Brandywine Shoal station:** Battery replacements, wind bird repairs
- **Burlington Bridge station:** Primary water level sensor replacement, antenna upgrades,, wind bird work
- **Philadelphia, Penns Landing current meter:** New sensor deployed
- **Delaware Bay, LB 10 current meter:** New equipment deployed

PORTS®: db0502 Delaware Bay Channel LB 10

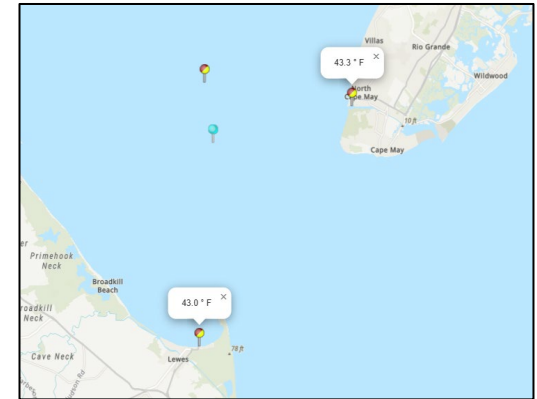
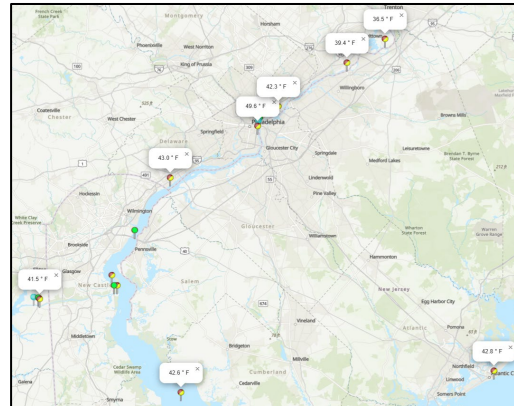
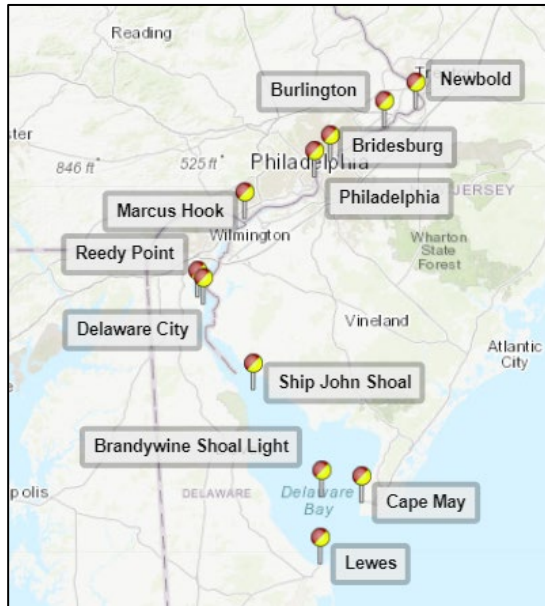


PORTS®: db0301 Philadelphia



# Data during ice season

- All water level stations have a backup pressure sensor in case ice impacts the primary sensor
- At a few stations, sensors go dry along the shore at extreme low waters (Delaware City, Marcus Hook)
- Many stations along the river measure water temperature - useful for monitoring of ice formation potential





**Questions?**

**[PORTS\\_program@noaa.gov](mailto:PORTS_program@noaa.gov)**  
**[christopher.diveglio@noaa.gov](mailto:christopher.diveglio@noaa.gov)**

**240-620-6919**

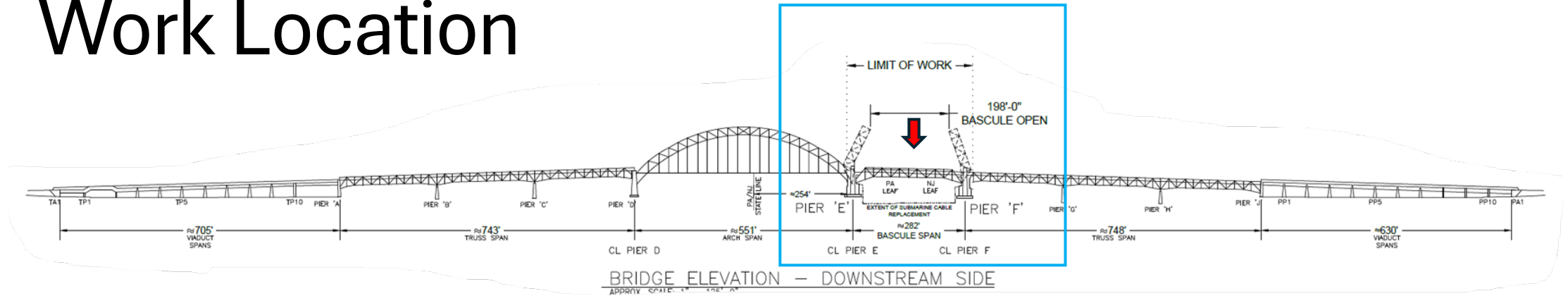
# SR 73 (Tacony-Palmyra) Bridge over Delaware River, mile 107.2 2027 Submarine Cable Replacement

Burlington County Bridge Commission

December 2025



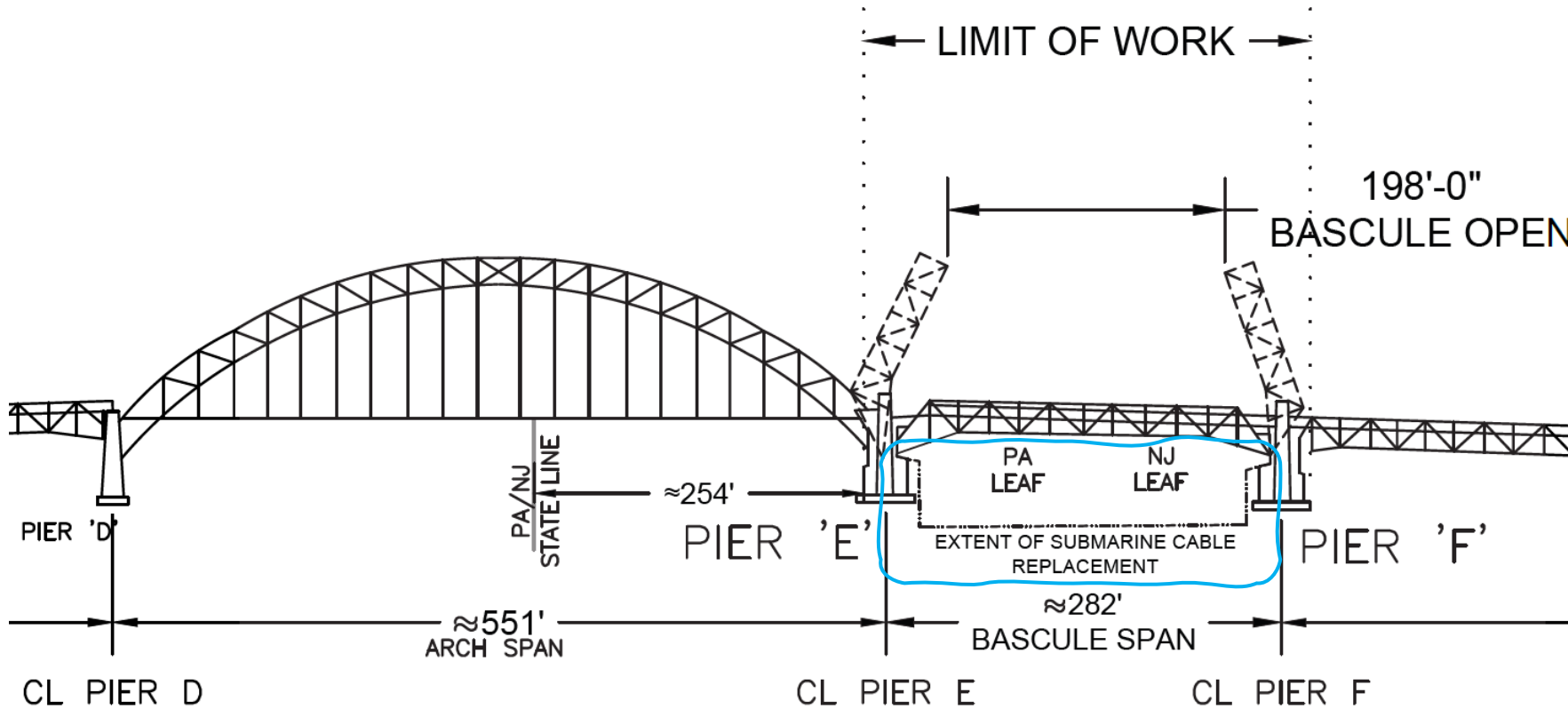
# Work Location



SR 73 (Tacony-Palmyra) Bridge over the Delaware River, at mile 107.2

This project involves replacing five buried underwater (submarine) cables that cross the river under the bascule span.

# Work Location



BRIDGE ELEVATION — DOWNSTREAM SIDE



# Summary

- The present cables were installed over forty years ago and are reaching the end of their useful life.
- These cables carry the bridge controls and redundant sources of electric power (PECO and PSE&G).
- River depth varies from forty-two to forty-eight feet in this area.
- Installation of the new cables requires trenching the river bottom to bury the cables roughly fifty feet below *mean-low-low-water* level.
- This burial depth will allow future channel deepening to forty-five feet without disturbing the cables.

# Timeframe

- Project Advertisement is scheduled for Spring 2026.
- Cable fabrication will take approximately 12 months.
- In-water work will occur from July 2 – September 2, 2027. Spring and fall shad restrictions force construction work into this summer “window”. Winter construction is difficult due to ice formation and reduced daylight hours.

# Construction Activities

- The Contractor will work 12 to 14-hour days, seven days a week until cables are installed. This will take advantage of long summer daylight hours
- Divers will excavate an underwater trench across the span.
- Once the trench is complete the new cables will be placed in the trench, and the trench will be backfilled.
- Once cables are installed and operational, the exposed portions of the existing cables will be removed.

# Mariner Impacts

- Divers in the water during the day. Slow bell requested.
- Several barges and work boats will be in the water under the bascule span.
- At least one barge tied to north face of Pier E in the secondary channel (under the arch span).
- The federal channel will be clear, and the bridge will be fully operational daily for ten to twelve hours each night for marine traffic to transit the bascule span.
- Secondary channel (under the arch span) will be open 24/7.
- In an emergency, it will take roughly an hour to recover the divers, equipment, and then move the barges out of the federal channel.



## U.S. Coast Guard Chief Petty Officers Association Liberty Chapter

---

### WHO WE ARE

The United States Coast Guard Chief Petty Officers Association (CPOA) – Liberty Chapter is a 501(c)(19) nonprofit organization, **EIN 84-21066155**, dedicated to strengthening the Coast Guard community. We support Active Duty, Reserve, Civilian, and Auxiliary personnel, along with their families, through assistance, morale programs, and community engagement.

### WHAT WE DO

- Emergency & Hardship Support: Direct financial or logistical aid during unexpected crises.
- Morale & Welfare Programs: Funding events, unit outreach, and wellness activities.
- Family & Community Support: Scholarships, youth programs, and deployment support.
- Advocacy & Engagement: Strengthening ties within the community and Coast Guard workforce.

### IMPACT OF DONOR SUPPORT

- Fill critical gaps not funded by federal channels.
- Enhance morale and operational readiness.
- Strengthening Coast Guard families through support resources.
- Expand community outreach and partnership programs.

### WHY YOUR SUPPORT MATTERS

The Coast Guard serves around the clock—responding to emergencies, safeguarding our coasts, and supporting national security. Donor support provides direct relief and stability to the personnel who stand the watch, ensuring they feel supported both on and off duty.

### WAYS TO GIVE

- Direct financial donations
- Corporate or community sponsorships
- Program or event sponsorship
- In-kind support (goods/services)
- Recurring monthly contributions

---

CPOALibertyChapter@gmail.com



## U.S. Coast Guard Chief Petty Officers Association Liberty Chapter

---

**All donations are tax-deductible to the extent allowed by law, and we are happy to provide donation receipts and any required documentation for your records.**

If you would like to support this effort or have any questions, please feel free to contact myself directly at **530-632-3313** or [\*\*CPOALibertyChapter@gmail.com\*\*](mailto:CPOALibertyChapter@gmail.com)

**Checks may be payable to: CPOA Liberty Chapter**

**Venmo: LibertyChapter-CPOA or PayPal: CPOA Liberty Chapter**

Thank you for considering this opportunity to support your Coast Guard members during this challenging time. Your generosity and commitment to our military community means more than words can express

Kind regards,

*Matthew Whitlow*

CPO Matthew Whitlow

President, Liberty Chapter

U.S. Coast Guard Chief Petty Officer Association



**venmo**

---

CPOALibertyChapter@gmail.com